

For Research Use Only

# BAG3 Recombinant antibody, PBS Only (Detector)

Catalog Number: 83779-2-PBS



## Basic Information

<b>Catalog Number:</b> 83779-2-PBS	<b>GenBank Accession Number:</b> BC006418	<b>Purification Method:</b> Protein A purification
<b>Size:</b> 100ug , Concentration: 1 mg/ml by Nanodrop;	<b>GeneID (NCBI):</b> 9531	<b>CloneNo.:</b> 240860D12
<b>Source:</b> Rabbit	<b>UNIPROT ID:</b> O95817	
<b>Isotype:</b> IgG	<b>Full Name:</b> BCL2-associated athanogene 3	
<b>Immunogen Catalog Number:</b> AG0956	<b>Calculated MW:</b> 61 kDa	

## Applications

**Tested Applications:**  
Cytometric bead array, Sandwich ELISA, Indirect ELISA, Sample test

**Species Specificity:**  
human

## Product Information

83779-2-PBS targets BAG3 as part of a matched antibody pair:

MP00740-1: 83779-1-PBS capture and 83779-2-PBS detection (validated in Cytometric bead array, Sandwich ELISA)

Unconjugated rabbit recombinant monoclonal antibody in PBS only (BSA and azide free) storage buffer at a concentration of 1 mg/mL, ready for conjugation. Created using Proteintech's proprietary in-house recombinant technology. Recombinant production enables unrivalled batch-to-batch consistency, easy scale-up, and future security of supply.

This conjugation ready format makes antibodies ideal for use in many applications including: ELISAs, multiplex assays requiring matched pairs, mass cytometry, and multiplex imaging applications. Antibody use should be optimized by the end user for each application and assay.

## Storage

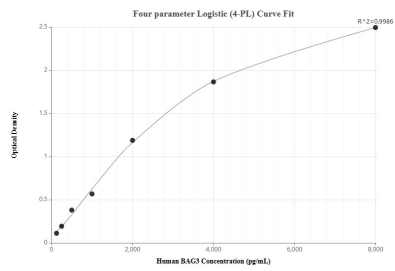
**Storage:**  
Store at -80°C.

**Storage Buffer:**  
PBS Only

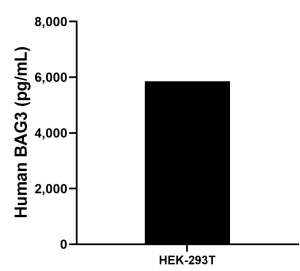
For technical support and original validation data for this product please contact:  
T: 1 (888) 4PTGLAB (1-888-478-4522) (toll free in USA), or 1(312) 455-8498 (outside USA)  
E: [proteintech@ptglab.com](mailto:proteintech@ptglab.com)  
W: [ptglab.com](http://ptglab.com)

This product is exclusively available under Proteintech Group brand and is not available to purchase from any other manufacturer.

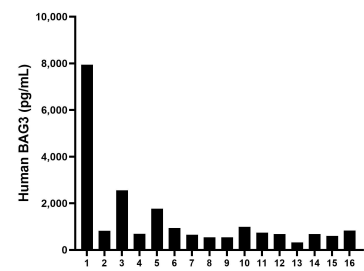
Selected Validation Data



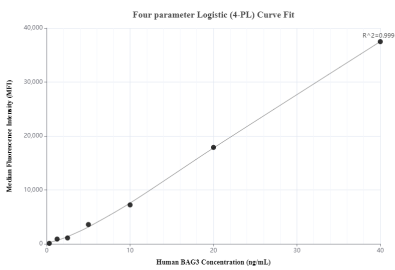
Sandwich ELISA standard curve of MP00740-1, Human BAG3 Recombinant Matched Antibody Pair - PBS only. 83779-1-PBS was coated to a plate as the capture antibody and incubated with serial dilutions of standard Ag0956. 83779-2-PBS was HRP conjugated as the detection antibody. Range: 125-8000 pg/mL



The mean BAG3 concentration was determined to be 5,853.6 /mL in HEK-293T cell extract based on a 1.4 mg/mL extract load.



Plasma of sixteen individual healthy human donors was measured. The human BAG3 concentration of detected samples was determined to be 1,332.2 pg/mL with a range of 324.4 - 7,946.1 pg/mL



Cytometric bead array standard curve of MP00740-1, BAG3 Recombinant Matched Antibody Pair, PBS Only. Capture antibody: 83779-1-PBS. Detection antibody: 83779-2-PBS. Standard: Ag0956. Range: 0.313-40 ng/mL