

For Research Use Only

Islet 1 Recombinant antibody, PBS Only (Detector)

Catalog Number: 83784-4-PBS



Basic Information

Catalog Number: 83784-4-PBS	GenBank Accession Number: BC031213	Purification Method: Protein A purification
Size: 100ug, Concentration: 1 mg/ml by Nanodrop;	GeneID (NCBI): 3670	CloneNo.: 240833D7
Source: Rabbit	UNIPROT ID: P61371	
Isotype: IgG	Full Name: ISL LIM homeobox 1	
Immunogen Catalog Number: AG33541	Calculated MW: 39 kDa	
	Observed MW: 39-45 kDa	

Applications

Tested Applications:
WB, IHC, IF/ICC, Cytometric bead array, Indirect ELISA

Species Specificity:
human, mouse

Product Information

83784-4-PBS targets Islet 1 as part of a matched antibody pair:

MP00771-3: 83784-2-PBS capture and 83784-4-PBS detection (validated in Cytometric bead array)

Unconjugated rabbit recombinant monoclonal antibody in PBS only (BSA and azide free) storage buffer at a concentration of 1 mg/mL, ready for conjugation. Created using Proteintech's proprietary in-house recombinant technology. Recombinant production enables unrivalled batch-to-batch consistency, easy scale-up, and future security of supply.

This conjugation ready format makes antibodies ideal for use in many applications including: ELISAs, multiplex assays requiring matched pairs, mass cytometry, and multiplex imaging applications. Antibody use should be optimized by the end user for each application and assay.

Background Information

ISL1 belongs to the LIM homeodomain transcription factor family that binds to the enhancer region of the INS gene. It plays a pivotal role in cardiogenesis, and lacking ISL1 expression results in growth arrest or displays profound defects in heart development, including atria, ventricle, and the inflow and outflow tracts. Ubiquitinated probably by WWP1 E3 ubiquitin ligase; ubiquitination is followed by protein degradation.

Storage

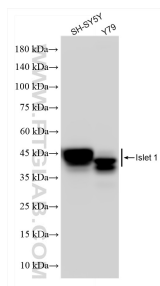
Storage:
Store at -80°C.

Storage Buffer:
PBS Only

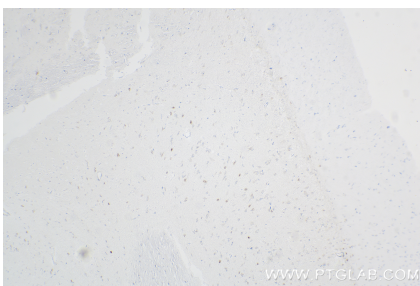
For technical support and original validation data for this product please contact:
T: 1 (888) 4PTGLAB (1-888-478-4522) (toll free in USA), or 1(312) 455-8498 (outside USA)
E: proteintech@ptglab.com
W: ptglab.com

This product is exclusively available under Proteintech Group brand and is not available to purchase from any other manufacturer.

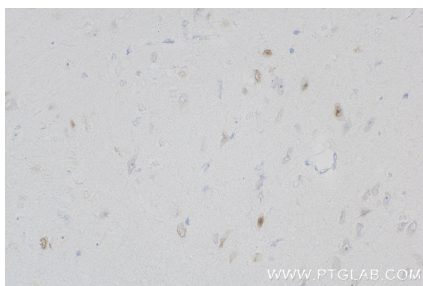
Selected Validation Data



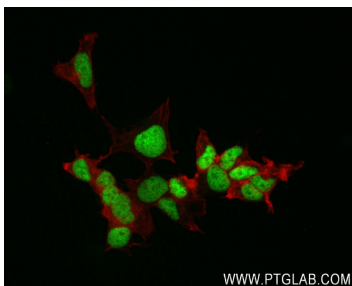
Various lysates were subjected to SDS PAGE followed by western blot with 83784-4-RR (Islet 1 antibody) at dilution of 1:10000 incubated at room temperature for 1.5 hours. This data was developed using the same antibody clone with 83784-4-PBS in a different storage buffer formulation.



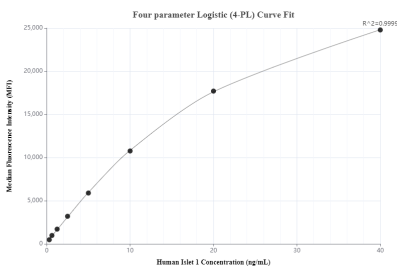
Immunohistochemical analysis of paraffin-embedded mouse brain tissue slide using 83784-4-RR (Islet 1 antibody) at dilution of 1:500 (under 10x lens). Heat mediated antigen retrieval with Tris-EDTA buffer (pH 9.0). This data was developed using the same antibody clone with 83784-4-PBS in a different storage buffer formulation.



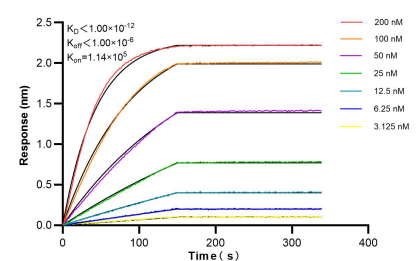
Immunohistochemical analysis of paraffin-embedded mouse brain tissue slide using 83784-4-RR (Islet 1 antibody) at dilution of 1:500 (under 40x lens). Heat mediated antigen retrieval with Tris-EDTA buffer (pH 9.0). This data was developed using the same antibody clone with 83784-4-PBS in a different storage buffer formulation.



Immunofluorescent analysis of (4% PFA) fixed SH-SY5Y cells using Islet 1 antibody (83784-4-RR, Clone: 240833D7) at dilution of 1:250 and CoraLite®488-Conjugated Goat Anti-Rabbit IgG(H+L) (SA00013-2), CL594-Phalloidin (red). This data was developed using the same antibody clone with 83784-4-PBS in a different storage buffer formulation.



Cytometric bead array standard curve of MP00771-3, Islet 1 Recombinant Matched Antibody Pair, PBS Only. Capture antibody: 83784-2-PBS. Detection antibody: 83784-4-PBS. Standard: Ag33541. Range: 0.313- 40 ng/mL



Bi-layer interferometry (BLI) kinetic assays of 83784-4-RR against Human Islet 1 were performed. The affinity constant is below 1 pM.