

For Research Use Only

# HIF2 $\alpha$ /EPAS1 Recombinant antibody, PBS Only (Capture)

Catalog Number: 83790-4-PBS



## Basic Information

<b>Catalog Number:</b> 83790-4-PBS	<b>GenBank Accession Number:</b> BC051338	<b>Purification Method:</b> Protein A purification
<b>Size:</b> 100ug, Concentration: 1 mg/ml by Nanodrop;	<b>GeneID (NCBI):</b> 2034	<b>CloneNo.:</b> 240736H7
<b>Source:</b> Rabbit	<b>UNIPROT ID:</b> Q99814	
<b>Isotype:</b> IgG	<b>Full Name:</b> endothelial PAS domain protein 1	
<b>Immunogen Catalog Number:</b> AG15199	<b>Calculated MW:</b> 96 kDa	

## Applications

**Tested Applications:**  
Cytometric bead array, Sandwich ELISA, Indirect ELISA,  
Sample test

**Species Specificity:**  
human

## Product Information

83790-4-PBS targets HIF2 $\alpha$ /EPAS1 as part of a matched antibody pair:

MP00775-1: 83790-4-PBS capture and 83790-1-PBS detection (validated in Cytometric bead array)

MP00775-3: 83790-4-PBS capture and 83790-3-PBS detection (validated in Cytometric bead array)

MP00775-4: 83790-4-PBS capture and 83790-5-PBS detection (validated in Sandwich ELISA)

Unconjugated rabbit recombinant monoclonal antibody in PBS only (BSA and azide free) storage buffer at a concentration of 1 mg/mL, ready for conjugation. Created using Proteintech's proprietary in-house recombinant technology. Recombinant production enables unrivalled batch-to-batch consistency, easy scale-up, and future security of supply.

This conjugation ready format makes antibodies ideal for use in many applications including: ELISAs, multiplex assays requiring matched pairs, mass cytometry, and multiplex imaging applications. Antibody use should be optimized by the end user for each application and assay.

## Storage

**Storage:**  
Store at -80°C.  
**Storage Buffer:**  
PBS Only

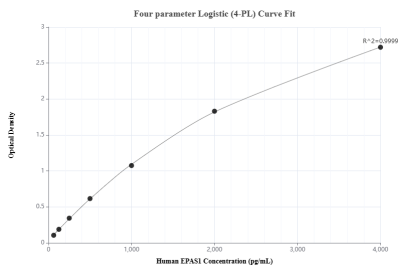
For technical support and original validation data for this product please contact:

T: 1 (888) 4PTGLAB (1-888-478-4522) (toll free  
in USA), or 1(312) 455-8498 (outside USA)

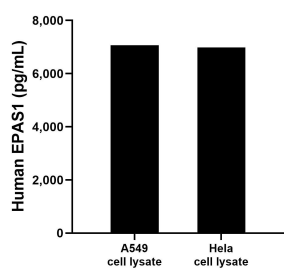
E: [proteintech@ptglab.com](mailto:proteintech@ptglab.com)  
W: [ptglab.com](http://ptglab.com)

This product is exclusively available under Proteintech Group brand and is not available to purchase from any other manufacturer.

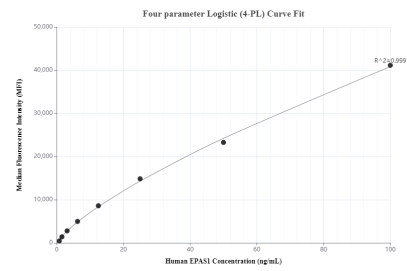
Selected Validation Data



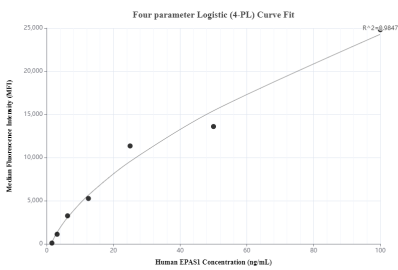
Sandwich ELISA standard curve of MP00775-4, Human HIF2α/EPAS1 Recombinant Matched Antibody Pair - PBS only. 83790-4-PBS was coated to a plate as the capture antibody and incubated with serial dilutions of standard Ag15199. 83790-5-PBS was HRP conjugated as the detection antibody. Range: 62.5-4000 pg/mL



A549 and HeLa cell lysates were measured. The human HIF2α/EPAS1 concentration of detected samples was determined to be 7,062.3 pg/mL (based on a 1.00 mg/mL extract load) in A549 cell lysate and 6,988.6 pg/mL (based on a 1.50 mg/mL extract load) in HeLa cell lysate.



Cytometric bead array standard curve of MP00775-1, HIF2α/EPAS1 Recombinant Matched Antibody Pair, PBS Only. Capture antibody: 83790-4-PBS. Detection antibody: 83790-1-PBS. Standard: Ag15199. Range: 0.78-100 ng/mL



Cytometric bead array standard curve of MP00775-3, HIF2α/EPAS1 Recombinant Matched Antibody Pair, PBS Only. Capture antibody: 83790-4-PBS. Detection antibody: 83790-3-PBS. Standard: Ag15199. Range: 1.56-100 ng/mL