

For Research Use Only

HIF2 α /EPAS1 Recombinant antibody, PBS Only (Detector)

Catalog Number: 83790-5-PBS



Basic Information

| | | |
|---|---|---|
| Catalog Number: 83790-5-PBS | GenBank Accession Number: BC051338 | Purification Method: Protein A purification |
| Size: 100ug , Concentration: 1 mg/ml by Nanodrop; | GeneID (NCBI): 2034 | CloneNo.: 240736C9 |
| Source: Rabbit | UNIPROT ID: Q99814 | |
| Isotype: IgG | Full Name: endothelial PAS domain protein 1 | |
| Immunogen Catalog Number: AG15199 | Calculated MW: 96 kDa | |

Applications

Tested Applications:
Sandwich ELISA, Indirect ELISA, Sample test

Species Specificity:
human

Product Information

83790-5-PBS targets HIF2 α /EPAS1 as part of a matched antibody pair:

MP00775-4: 83790-4-PBS capture and 83790-5-PBS detection (validated in Sandwich ELISA)

Unconjugated rabbit recombinant monoclonal antibody in PBS only (BSA and azide free) storage buffer at a concentration of 1 mg/mL, ready for conjugation. Created using Proteintech's proprietary in-house recombinant technology. Recombinant production enables unrivalled batch-to-batch consistency, easy scale-up, and future security of supply.

This conjugation ready format makes antibodies ideal for use in many applications including: ELISAs, multiplex assays requiring matched pairs, mass cytometry, and multiplex imaging applications. Antibody use should be optimized by the end user for each application and assay.

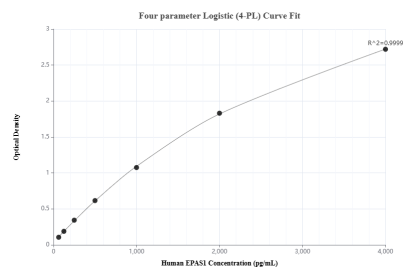
Storage

Storage:
Store at -80°C.
Storage Buffer:
PBS Only

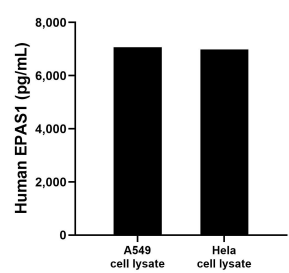
For technical support and original validation data for this product please contact:
T: 1 (888) 4PTGLAB (1-888-478-4522) (toll free in USA), or 1(312) 455-8498 (outside USA)
E: proteintech@ptglab.com
W: ptglab.com

This product is exclusively available under Proteintech Group brand and is not available to purchase from any other manufacturer.

Selected Validation Data



Sandwich ELISA standard curve of MP00775-4, Human HIF2a/EPAS1 Recombinant Matched Antibody Pair - PBS only. 83790-4-PBS was coated to a plate as the capture antibody and incubated with serial dilutions of standard Ag15199. 83790-5-PBS was HRP conjugated as the detection antibody. Range: 62.5-4000 pg/mL



A549 and HeLa cell lysates were measured. The human HIF2a/EPAS1 concentration of detected samples was determined to be 7,062.3 pg/mL (based on a 1.00 mg/mL extract load) in A549 cell lysate and 6,988.6 pg/mL (based on a 1.50 mg/mL extract load) in HeLa cell lysate.