

For Research Use Only

CEBPB Recombinant antibody, PBS Only

Catalog Number: 83791-6-PBS



Basic Information

Catalog Number: 83791-6-PBS	GenBank Accession Number: BC007538	Purification Method: Protein A purification
Size: 100ug, Concentration: 1 mg/ml by Nanodrop;	GeneID (NCBI): 1051	CloneNo.: 240836G6
Source: Rabbit	UNIPROT ID: P17676	
Isotype: IgG	Full Name: CCAAT/enhancer binding protein (C/EBP), beta	
Immunogen Catalog Number: AG20073	Calculated MW: 345 aa, 36 kDa	
	Observed MW: 42 kDa, 46 kDa	

Applications

Tested Applications:
WB, IHC, IF/ICC, FC (Intra), ELISA

Species Specificity:
human

Background Information

CCAAT/enhancer-binding protein beta (CEBPB), also known as LAP, is a important transcriptional activator in the regulation of genes involved in immune and inflammatory responses. It specifically binds to an IL-1 response element in the IL-6 gene. CEBPb mRNAs possess alternative translation-initiation codons, which result in the formation of truncated forms of the protein. Three variants of CEBPBs have been detected: a 46 kDa full-length liver-enriched transcription-activating protein (LAP1), a 42 kDa LAP2 and a 20 kDa liver-enriched transcription-inhibitory protein (LIP). (PMID:18820298).

Storage

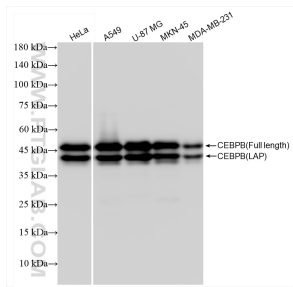
Storage:
Store at -80°C.

Storage Buffer:
PBS Only

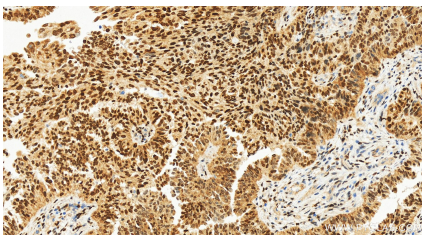
For technical support and original validation data for this product please contact:
T: 1 (888) 4PTGLAB (1-888-478-4522) (toll free in USA), or 1(312) 455-8498 (outside USA)
E: proteintech@ptglab.com
W: ptglab.com

This product is exclusively available under Proteintech Group brand and is not available to purchase from any other manufacturer.

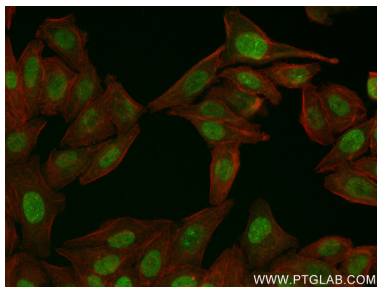
Selected Validation Data



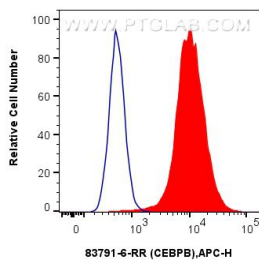
Various lysates were subjected to SDS PAGE followed by western blot with 83791-6-RR (CEBPB antibody) at dilution of 1:10000 incubated at room temperature for 1.5 hours. This data was developed using the same antibody clone with 83791-6-PBS in a different storage buffer formulation.



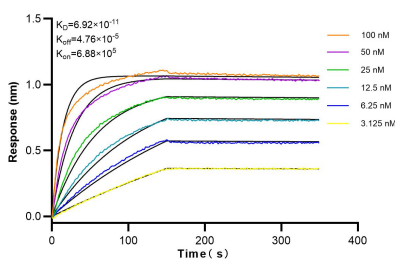
Immunohistochemical analysis of paraffin-embedded human ovarian cancer slide using 83791-6-RR (CEBPB antibody) at dilution of 1:1000 (under 20x lens). Heat mediated antigen retrieval with Tris-EDTA buffer (pH 9.0). This data was developed using the same antibody clone with 83791-6-PBS in a different storage buffer formulation.



Immunofluorescent analysis of (4% PFA) fixed HepG2 cells using CEBPB antibody (83791-6-RR, Clone: 240836G6) at dilution of 1:300 and CoraLite®488-Conjugated AffiniPure Goat Anti-Rabbit IgG(H+L) (SA00013-2), CL594-Phalloidin (red). This data was developed using the same antibody clone with 83791-6-PBS in a different storage buffer formulation.



1x10⁶ HeLa cells were intracellularly stained with 0.25 ug CEBPB Recombinant antibody (83791-6-RR, Clone:240836G6) and APC-Conjugated AffiniPure Goat Anti-Rabbit IgG(H+L)(red), or 0.25 ug Isotype Control (blue). Cells were fixed and permeabilized with True-Nuclear Transcription Factor Buffer Set. This data was developed using the same antibody clone with 83791-6-PBS in a different storage buffer formulation.



Biolayer interferometry (BLI) kinetic assays of 83791-6-RR against Human CEBPB were performed. The affinity constant is 69.2 pM.