

For Research Use Only

GPD1L Recombinant antibody

Catalog Number: 83792-2-RR



Basic Information

Catalog Number: 83792-2-RR	GenBank Accession Number: BC028726	Purification Method: Protein A purification
Size: 100ul , Concentration: 1000 ug/ml by Nanodrop;	GeneID (NCBI): 23171	CloneNo.: 240846F9
Source: Rabbit	UNIPROT ID: Q8N335	Recommended Dilutions: WB 1:5000-1:50000
Isotype: IgG	Full Name: glycerol-3-phosphate dehydrogenase 1-like	
Immunogen Catalog Number: AG10977	Calculated MW: 351 aa, 38 kDa	
	Observed MW: 35-40 kDa	

Applications

Tested Applications: WB, ELISA	Positive Controls:
Species Specificity: human, mouse, rat	WB : A549 cells, HepG2 cells, HEK-293 cells, MDA-MB-231 cells, NCI-H1299 cells, mouse heart tissue, rat heart tissue

Background Information

Glycerol-3-phosphate dehydrogenase 1-like (GPD1L) is encoded by the gene GPD1L, which is located on chromosome 3p22.3. GPD1L is responsible for catalyzing the conversion of sn-glycerol 3-phosphate to glycero phosphate. GPD1L displayed a dysregulated state in a wide variety of cancers.

Storage

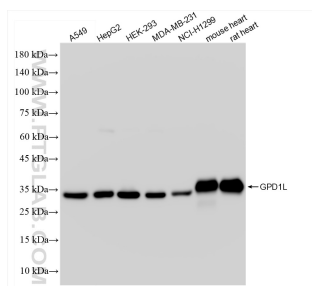
Storage:
Store at -20°C. Stable for one year after shipment.
Storage Buffer:
PBS with 0.02% sodium azide and 50% glycerol pH 7.3.
Aliquoting is unnecessary for -20°C storage

*** 20ul sizes contain 0.1% BSA

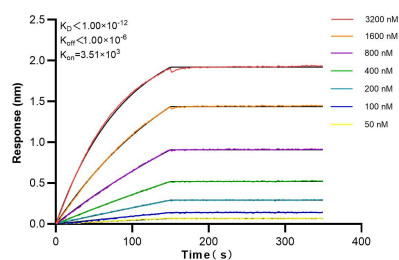
For technical support and original validation data for this product please contact:
T: 1 (888) 4PTGLAB (1-888-478-4522) (toll free in USA), or 1(312) 455-8498 (outside USA)
E: proteintech@ptglab.com
W: ptglab.com

This product is exclusively available under Proteintech Group brand and is not available to purchase from any other manufacturer.

Selected Validation Data



Various lysates were subjected to SDS PAGE followed by western blot with 83792-2-RR (GPD1L antibody) at dilution of 1:10000 incubated at room temperature for 1.5 hours.



Biolayer interferometry (BLI) kinetic assays of 83792-2-RR against Human GPD1L were performed. The affinity constant is below 1 pM.