

For Research Use Only

WDR21C Recombinant antibody

Catalog Number: 83802-4-RR



Basic Information

Catalog Number: 83802-4-RR	GenBank Accession Number: BC111778	Purification Method: Protein A purification
Size: 100ul , Concentration: 1000 ug/ml by Nanodrop;	GeneID (NCBI): 138009	CloneNo.: 240402H3
Source: Rabbit	UNIPROT ID: Q8NA75	Recommended Dilutions: WB 1:5000-1:50000
Isotype: IgG	Full Name: WD repeat domain 21C	
Immunogen Catalog Number: AG30748	Calculated MW: 395 aa, 44 kDa	
	Observed MW: 44-50 kDa	

Applications

Tested Applications: WB, ELISA	Positive Controls: WB : HEK-293 cells, HeLa cells, U-251 cells
Species Specificity: human	

Background Information

WDR21C (WD repeat-containing protein 21C), also known as DCAF4L2. It is expected to be located in the cytoplasm, which is enriched in testis. WDR21C is a member of WD-repeat proteins, which commonly serve as mediators of protein-protein interplay. It is reported that elevated WDR21C expression in human colorectal cancer (CRC) significantly correlated with a more advanced clinical stage as in lymphatic and distant metastasis. More importantly, elevated WDR21C expression is an independent prognosis factor for survival (PMID: 27158335). The molecular weight of WDR21C is 43 kDa.

Storage

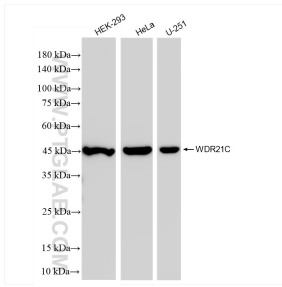
Storage:
Store at -20°C. Stable for one year after shipment.
Storage Buffer:
PBS with 0.02% sodium azide and 50% glycerol pH 7.3.
Aliquoting is unnecessary for -20°C storage

*** 20ul sizes contain 0.1% BSA

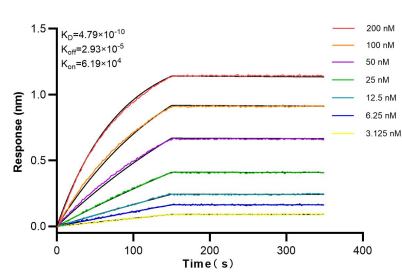
For technical support and original validation data for this product please contact:
T: 1 (888) 4PTGLAB (1-888-478-4522) (toll free in USA), or 1(312) 455-8498 (outside USA)
E: proteintech@ptglab.com
W: ptglab.com

This product is exclusively available under Proteintech Group brand and is not available to purchase from any other manufacturer.

Selected Validation Data



Various lysates were subjected to SDS PAGE followed by western blot with 83802-4-RR (WDR21C antibody) at dilution of 1:10000 incubated at room temperature for 1.5 hours.



Biolayer interferometry (BLI) kinetic assays of 83802-4-RR against Human WDR21C were performed. The affinity constant is 0.479 nM.