

For Research Use Only

MITF Recombinant antibody

Catalog Number: 83803-2-RR



Basic Information

Catalog Number:

83803-2-RR

Size:

100ul, Concentration: 650 ug/ml by Nanodrop;

Source:

Rabbit

Isotype:

IgG

Immunogen Catalog Number:

AG3679

GenBank Accession Number:

BC012503

GeneID (NCBI):

4286

UNIPROT ID:

O75030

Full Name:

microphthalmia-associated transcription factor

Calculated MW:

91 aa, 10 kDa, 59 kDa

Observed MW:

60-65 kDa

Purification Method:

Protein A purification

CloneNo.:

240815E7

Recommended Dilutions:

IF/ICC 1:200-1:800

Applications

Tested Applications:

IF/ICC, FC (Intra), ELISA

Species Specificity:

human

Positive Controls:

IF/ICC : HeLa cells, HepG2 cells, A431 cells

Background Information

The retinal pigment epithelium (RPE) has an essential role in maintaining visual function and dedifferentiation of RPE contributes to the pathophysiology of several ocular diseases (PMID:22523078). Microphthalmia-associated transcription factor (MITF) is a key regulator of RPE differentiation that is also down-regulated in dedifferentiated hfRPE cells. MITF is a basic helix-loop-helix (hHLH)-leucine zipper protein that involves in the development of various cell types, including neural crest-derived melanocytes and optic cup-derived retinal pigment epithelial cells (PMID: 10578055).

Storage

Storage:

Store at -20°C. Stable for one year after shipment.

Storage Buffer:

PBS with 0.02% sodium azide and 50% glycerol pH 7.3.

Aliquoting is unnecessary for -20°C storage

*** 20ul sizes contain 0.1% BSA

For technical support and original validation data for this product please contact:

T: 1 (888) 4PTGLAB (1-888-478-4522) (toll free in USA), or 1(312) 455-8498 (outside USA)

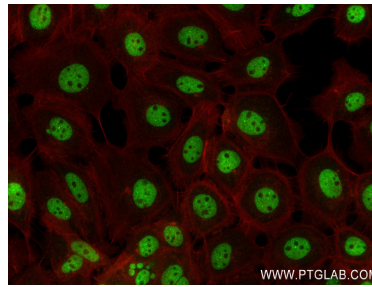
E: proteintech@ptglab.com
W: ptglab.com

This product is exclusively available under Proteintech Group brand and is not available to purchase from any other manufacturer.

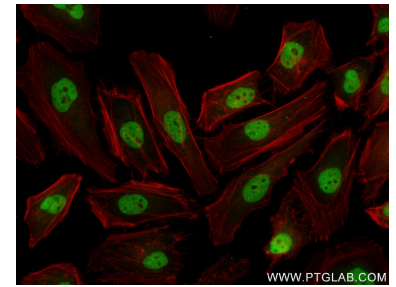
Selected Validation Data



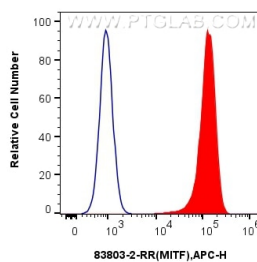
Immunofluorescent analysis of (4% PFA) fixed HepG2 cells using MITF antibody (83803-2-RR, Clone: 240815E7) at dilution of 1:400 and CoraLite®488-Conjugated Goat Anti-Rabbit IgG(H+L) (SA00013-2), CL594-Phalloidin (red).



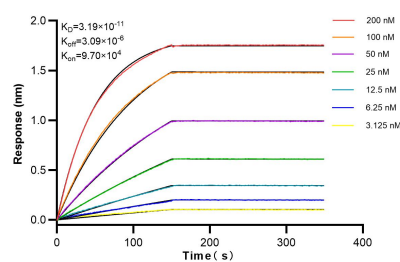
Immunofluorescent analysis of (4% PFA) fixed A431 cells using MITF antibody (83803-2-RR, Clone: 240815E7) at dilution of 1:400 and CoraLite®488-Conjugated Goat Anti-Rabbit IgG(H+L) (SA00013-2), CL594-Phalloidin (red).



Immunofluorescent analysis of (4% PFA) fixed HeLa cells using MITF antibody (83803-2-RR, Clone: 240815E7) at dilution of 1:400 and CoraLite®488-Conjugated AffiniPure Goat Anti-Rabbit IgG(H+L) (SA00013-2), CL594-Phalloidin (red).



1x10⁶ HeLa cells were intracellularly stained with 0.25 ug MITF Recombinant antibody (83803-2-RR, Clone:240815E7) and APC-Conjugated AffiniPure Goat Anti-Rabbit IgG(H+L)(red), or 0.25 ug Isotype Control (blue). Cells were fixed and permeabilized with Transcription Factor Staining Buffer Kit (PF00011).



Biolayer interferometry (BLI) kinetic assays of 83803-2-RR against Human MITF were performed. The affinity constant is 31.9 pM.