

For Research Use Only

# TBX21/T-bet Recombinant antibody, PBS Only

Catalog Number: 83804-6-PBS



## Basic Information

Catalog Number:

83804-6-PBS

Size:

100ug, Concentration: 1 mg/ml by  
Nanodrop;

Source:

Rabbit

Isotype:

IgG

Immunogen Catalog Number:

AG4618

GenBank Accession Number:

BC039739

GeneID (NCBI):

30009

ENSEMBL Gene ID:

ENSG00000073861

UNIPROT ID:

Q9UL17

Full Name:

T-box 21

Calculated MW:

535 aa, 58 kDa

Observed MW:

60-65 kDa

Purification Method:

Protein A purification

CloneNo.:

240849C1

## Applications

Tested Applications:

WB, Indirect ELISA

Species Specificity:

human, mouse

## Background Information

TBX21 is a transcription factor that drives the Th1 immune response primarily through promoting expression of the IFN- $\gamma$  gene. TBX21 initiates TH1 lineage development from naive TH precursor cells both by activating TH1 genetic programs and by repressing the opposing TH2 programs. It has also been shown to play an influential role in inflammatory processes such as inflammatory bowel disease, autoimmune diseases such as rheumatoid arthritis, and immune-mediated conditions like asthma.

## Storage

Storage:

Store at -80°C.

Storage Buffer:

PBS Only

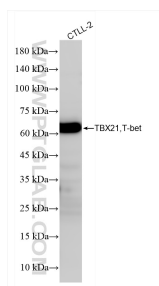
For technical support and original validation data for this product please contact:

T: 1 (888) 4PTGLAB (1-888-478-4522) (toll free  
in USA), or 1(312) 455-8498 (outside USA)

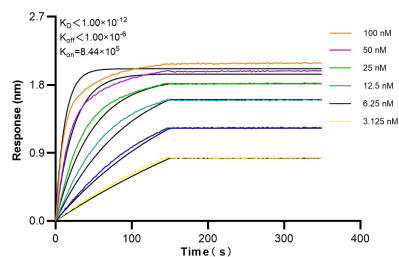
E: [proteintech@ptglab.com](mailto:proteintech@ptglab.com)  
W: [ptglab.com](http://ptglab.com)

This product is exclusively available under Proteintech Group brand and is not available to purchase from any other manufacturer.

## Selected Validation Data



CTLL-2 cells were subjected to SDS PAGE followed by western blot with 83804-6-RR (TBX21/T-bet antibody) at dilution of 1:10000 incubated at room temperature for 1.5 hours. This data was developed using the same antibody clone with 83804-6-PBS in a different storage buffer formulation.



Biolayer interferometry (BLI) kinetic assays of 83804-6-RR against Human TBX21, T-bet were performed. The affinity constant is below 1 pM.