

For Research Use Only

TBX21/T-bet Recombinant antibody

Catalog Number: 83804-6-RR



Basic Information

Catalog Number:

83804-6-RR

Size:

100ul, Concentration: 1000 µg/ml by
Nanodrop;

Source:

Rabbit

Isotype:

IgG

Immunogen Catalog Number:

AG4618

GenBank Accession Number:

BC039739

GeneID (NCBI):

30009

ENSEMBL Gene ID:

ENSG00000073861

UNIPROT ID:

Q9UL17

Full Name:

T-box 21

Calculated MW:

535 aa, 58 kDa

Observed MW:

60-65 kDa

Purification Method:

Protein A purification

CloneNo.:

240849C1

Recommended Dilutions:

WB 1:5000-1:50000

Applications

Tested Applications:

WB, ELISA

Species Specificity:

human, mouse

Positive Controls:

WB : CTLL-2 cells,

Background Information

TBX21 is a transcription factor that drives the Th1 immune response primarily through promoting expression of the IFN-γ gene. TBX21 initiates TH1 lineage development from naive TH precursor cells both by activating TH1 genetic programs and by repressing the opposing TH2 programs. It has also been shown to play an influential role in inflammatory processes such as inflammatory bowel disease, autoimmune diseases such as rheumatoid arthritis, and immune-mediated conditions like asthma.

Storage

Storage:

Store at -20°C. Stable for one year after shipment.

Storage Buffer:

PBS with 0.02% sodium azide and 50% glycerol pH 7.3.

Aliquoting is unnecessary for -20°C storage

*** 20ul sizes contain 0.1% BSA

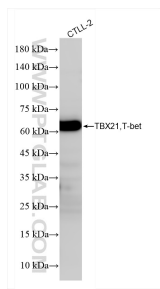
For technical support and original validation data for this product please contact:

T: 1 (888) 4PTGLAB (1-888-478-4522) (toll free
in USA), or 1(312) 455-8498 (outside USA)

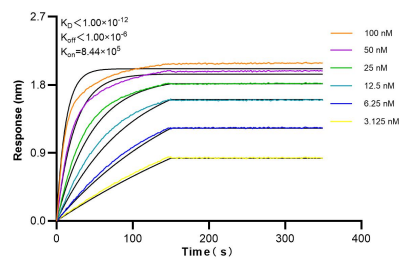
E: proteintech@ptglab.com
W: ptglab.com

This product is exclusively available under Proteintech Group brand and is not available to purchase from any other manufacturer.

Selected Validation Data



CTLL-2 cells were subjected to SDS PAGE followed by western blot with 83804-6-RR (TBX21/T-bet antibody) at dilution of 1:10000 incubated at room temperature for 1.5 hours.



Biolayer interferometry (BLI) kinetic assays of 83804-6-RR against Human TBX21, T-bet were performed. The affinity constant is below 1 pM.