

For Research Use Only

EGFR Recombinant antibody, PBS Only

Catalog Number: 83806-1-PBS



Basic Information

Catalog Number: 83806-1-PBS	GenBank Accession Number: NM_005228	Purification Method: Protein A purification
Size: 100ug, Concentration: 1 mg/ml by Nanodrop;	GeneID (NCBI): 1956	CloneNo.: 240603F10
Source: Rabbit	UNIPROT ID: P00533	
Isotype: IgG	Full Name: epidermal growth factor receptor (erythroblastic leukemia viral (v-erb-b) oncogene homolog, avian)	
	Calculated MW: 134 kDa	
	Observed MW: 145-165 kDa	

Applications

Tested Applications:
WB, IHC, IF/ICC, FC (Intra), ELISA

Species Specificity:
human

Background Information

EGFR, also named as ERBB1, is a cell-surface receptor for members of the epidermal growth factor family (EGF-family) of extracellular protein ligands. Binding of the protein to a ligand induces receptor dimerization and tyrosine autophosphorylation and leads to cell proliferation. The gene resides on chromosome 7p12, encoding a 170 kDa membrane-associated glycoprotein. Recent studies have shown EGFR plays a critical role in cancer development and progression, including cell proliferation, apoptosis, angiogenesis, and metastatic spread. Mutations in this gene are associated with lung cancer.

Storage

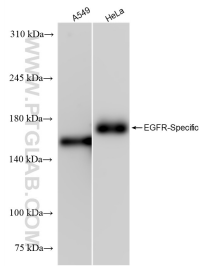
Storage:
Store at -80°C.

Storage Buffer:
PBS Only

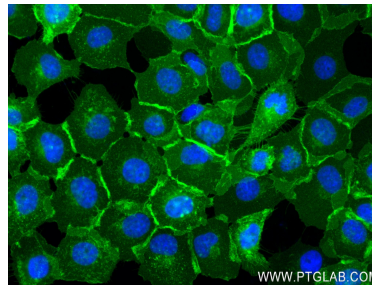
For technical support and original validation data for this product please contact:
T: 1 (888) 4PTGLAB (1-888-478-4522) (toll free in USA), or 1(312) 455-8498 (outside USA)
E: proteintech@ptglab.com
W: ptglab.com

This product is exclusively available under Proteintech Group brand and is not available to purchase from any other manufacturer.

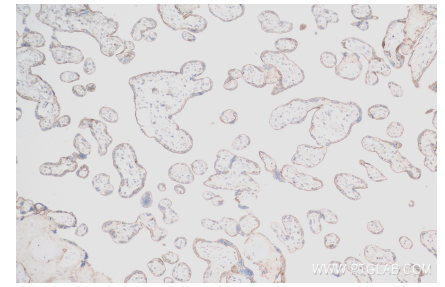
Selected Validation Data



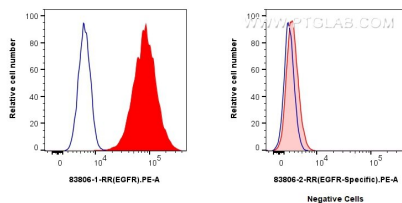
Various lysates were subjected to SDS PAGE followed by western blot with 83806-1-RR (EGFR antibody) at dilution of 1:5000 incubated at room temperature for 1.5 hours. This data was developed using the same antibody clone with 83806-1-PBS in a different storage buffer formulation.



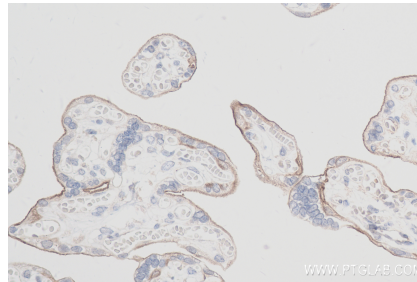
Immunofluorescent analysis of (4% PFA) fixed A431 cells using EGFR-Specific antibody (83806-1-RR, Clone: 240603F10) at dilution of 1:400 and CoraLite® 488-Conjugated AffiniPure Goat Anti-Rabbit IgG(H+L) (SA00013-2). This data was developed using the same antibody clone with 83806-1-PBS in a different storage buffer formulation.



Immunohistochemical analysis of paraffin-embedded human placenta tissue slide using 83806-1-RR (EGFR antibody) at dilution of 1:200 (under 10x lens). Heat mediated antigen retrieval with Tris-EDTA buffer (pH 9.0). This data was developed using the same antibody clone with 83806-1-PBS in a different storage buffer formulation.



1×10^6 A431 cells (left) or Jurkat cells (right) were intracellularly stained with 0.4 ug EGFR Recombinant antibody (83806-1-RR, Clone: 240603F10) and PE-Conjugated Goat Anti-Rabbit IgG(H+L) (red), or 0.4 ug Isotype Control (blue). Cells were fixed with 4% PFA. This data was developed using the same antibody clone with 83806-1-PBS in a different storage buffer formulation.



Immunohistochemical analysis of paraffin-embedded human placenta tissue slide using 83806-1-RR (EGFR antibody) at dilution of 1:200 (under 40x lens). Heat mediated antigen retrieval with Tris-EDTA buffer (pH 9.0). This data was developed using the same antibody clone with 83806-1-PBS in a different storage buffer formulation.