

For Research Use Only

GATA3 Recombinant antibody, PBS Only (Capture/Detector)

Catalog Number: 83808-4-PBS



Basic Information

Catalog Number: 83808-4-PBS	GenBank Accession Number: BC003070	Purification Method: Protein A purification
Size: 100ug , Concentration: 1 mg/ml by Nanodrop;	GeneID (NCBI): 2625	CloneNo.: 240684F5
Source: Rabbit	UNIPROT ID: P23771	
Isotype: IgG	Full Name: GATA binding protein 3	
Immunogen Catalog Number: AG0174	Calculated MW: 443 aa, 48 kDa	

Applications

Tested Applications:
Cytometric bead array, Sandwich ELISA, Indirect ELISA, Sample test

Species Specificity:
human

Product Information

83808-4-PBS targets GATA3 as part of a matched antibody pair:

MP01933-1: 83808-1-PBS capture and 83808-4-PBS detection (validated in Cytometric bead array, Sandwich ELISA)

MP01933-2: 83808-4-PBS capture and 83808-3-PBS detection (validated in Cytometric bead array)

Unconjugated rabbit recombinant monoclonal antibody in PBS only (BSA and azide free) storage buffer at a concentration of 1 mg/mL, ready for conjugation. Created using Proteintech's proprietary in-house recombinant technology. Recombinant production enables unrivalled batch-to-batch consistency, easy scale-up, and future security of supply.

This conjugation ready format makes antibodies ideal for use in many applications including: ELISAs, multiplex assays requiring matched pairs, mass cytometry, and multiplex imaging applications. Antibody use should be optimized by the end user for each application and assay.

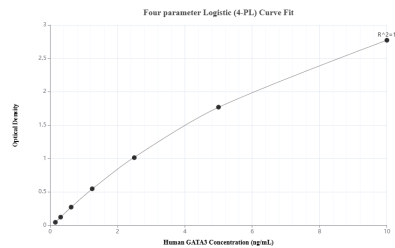
Storage

Storage:
Store at -80°C.
Storage Buffer:
PBS only, pH7.3

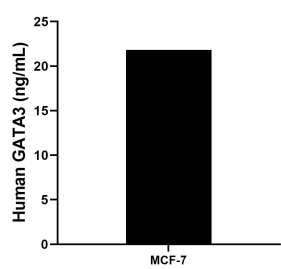
For technical support and original validation data for this product please contact:
T: 1 (888) 4PTGLAB (1-888-478-4522) (toll free in USA), or 1(312) 455-8498 (outside USA)
E: proteintech@ptglab.com
W: ptglab.com

This product is exclusively available under Proteintech Group brand and is not available to purchase from any other manufacturer.

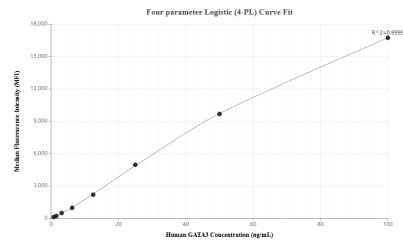
Selected Validation Data



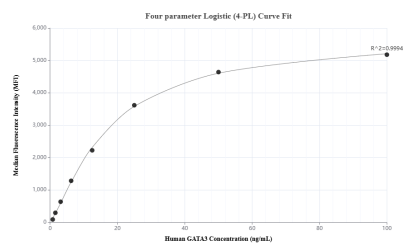
Sandwich ELISA standard curve of MP01933-1, Human GATA3 Recombinant Matched Antibody Pair - PBS only. 83808-1-PBS was coated to a plate as the capture antibody and incubated with serial dilutions of standard Ag0174. 83808-4-PBS was HRP conjugated as the detection antibody. Range: 0.156-10 ng/mL



The mean GATA3 concentration was determined to be 21.82 ng/mL in MCF-7 cell extract based on a 1.3 mg/mL extract load.



Cytometric bead array standard curve of MP01933-1, GATA3 Recombinant Matched Antibody Pair, PBS Only. Capture antibody: 83808-1-PBS. Detection antibody: 83808-4-PBS. Standard: Ag0174. Range: 0.781-100 ng/mL



Cytometric bead array standard curve of MP01933-2, GATA3 Recombinant Matched Antibody Pair, PBS Only. Capture antibody: 83808-4-PBS. Detection antibody: 83808-3-PBS. Standard: Ag0174. Range: 0.781-100 ng/mL