

For Research Use Only

GABARAPL1 Recombinant antibody

Catalog Number: 83817-1-RR



Basic Information

Catalog Number: 83817-1-RR	GenBank Accession Number: BC009309	Purification Method: Protein A purification
Size: 100ul , Concentration: 1000 ug/ml by Nanodrop;	GeneID (NCBI): 23710	CloneNo.: 240533F5
Source: Rabbit	UNIPROT ID: Q9HOR8	Recommended Dilutions: WB 1:5000-1:50000 IHC 1:200-1:800 IF/ICC 1:50-1:500
Isotype: IgG	Full Name: GABA(A) receptor-associated protein like 1	
Immunogen Catalog Number: AG1473	Calculated MW: 14 kDa	
	Observed MW: 16 kDa	

Applications

Tested Applications:
WB, IHC, IF/ICC, ELISA

Species Specificity:
human, mouse, rat

Note-IHC: suggested antigen retrieval with TE buffer pH 9.0; (*) Alternatively, antigen retrieval may be performed with citrate buffer pH 6.0

Positive Controls:

WB : mouse liver tissue, mouse brain tissue, rat brain tissue, rat liver tissue

IHC : mouse brain tissue,

IF/ICC : HepG2 cells,

Background Information

GABARAPL1 (GABARAP-like protein 1), also named ATG8, GEC1, APG8L, ATG8L, and APG8-LIKE, is a member of the GABARP (GABAA receptor-associated protein) family. GABARAPL1 was initially identified as an estrogen-regulated gene and the protein acts in receptor and vesicle transport. It's also involved in the process of autophagy like GABARAP and GABARAPL2 and may be considered as an autophagic marker. It is expressed at very high levels in the brain, heart, peripheral blood leukocytes, liver, kidney, placenta, and skeletal muscle and at very low levels in the thymus and small intestine.

Storage

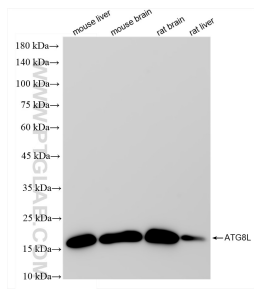
Storage:
Store at -20°C. Stable for one year after shipment.
Storage Buffer:
PBS with 0.02% sodium azide and 50% glycerol
Aliquoting is unnecessary for -20°C storage

*** 20ul sizes contain 0.1% BSA

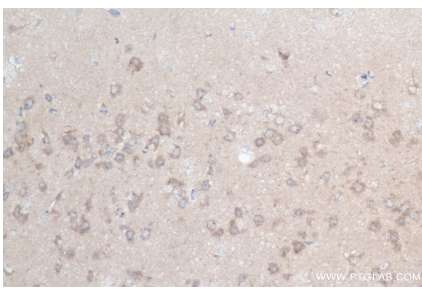
For technical support and original validation data for this product please contact:
T: 1 (888) 4PTGLAB (1-888-478-4522) (toll free in USA), or 1(312) 455-8498 (outside USA)
E: proteintech@ptglab.com
W: ptglab.com

This product is exclusively available under Proteintech Group brand and is not available to purchase from any other manufacturer.

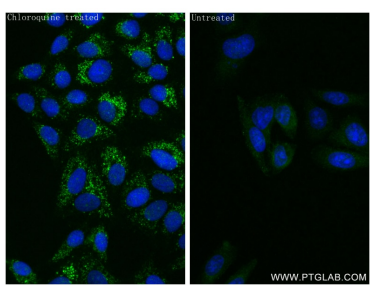
Selected Validation Data



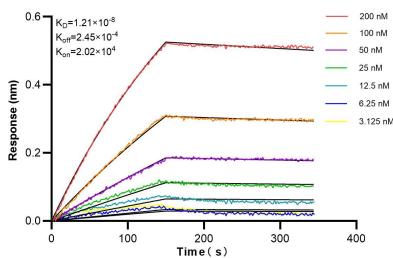
Various lysates were subjected to SDS PAGE followed by western blot with 83817-1-RR (ATG8L antibody) at dilution of 1:10000 incubated at room temperature for 1.5 hours.



Immunohistochemical analysis of paraffin-embedded mouse brain tissue slide using 83817-1-RR (GABARAPL1 antibody) at dilution of 1:400 (under 40x lens). Heat mediated antigen retrieval with Tris-EDTA buffer (pH 9.0).



Immunofluorescent analysis of (4% PFA) fixed HepG2 cells using ATG8L antibody (83817-1-RR, Clone: 240533F5) at dilution of 1:200 and CoraLite®488-Conjugated AffiniPure Goat Anti-Rabbit IgG(H+L) (SA00013-2).



Bioluminescence resonance energy transfer (BRET) kinetic assays of 83817-1-RR against Human GABARAPL1 were performed. The affinity constant is 12.1 nM.