

For Research Use Only

# PSENEN Recombinant antibody

Catalog Number: 83818-1-RR



## Basic Information

<b>Catalog Number:</b> 83818-1-RR	<b>GenBank Accession Number:</b> BC009575	<b>Purification Method:</b> Protein A purification
<b>Size:</b> 100ul , Concentration: 1000 ug/ml by Nanodrop;	<b>GeneID (NCBI):</b> 55851	<b>CloneNo.:</b> 240596H2
<b>Source:</b> Rabbit	<b>UNIPROT ID:</b> Q9NZ42	<b>Recommended Dilutions:</b> WB 1:2000-1:10000
<b>Isotype:</b> IgG	<b>Full Name:</b> presenilin enhancer 2 homolog (C. elegans)	
<b>Immunogen Catalog Number:</b> AG9243	<b>Calculated MW:</b> 101 aa, 12 kDa	
	<b>Observed MW:</b> 12 kDa	

## Applications

<b>Tested Applications:</b> WB, ELISA	<b>Positive Controls:</b> WB : A549 cells, SH-SY5Y cells
<b>Species Specificity:</b> human	

## Background Information

PSENEN, also named PEN2, is a component of the gamma-secretase complex, which also includes presenilin (PSEN1) and nicastrin (NCSTN). The gamma-secretase complex is required for the intramembrane proteolysis of a number of membrane proteins, including the amyloid-beta precursor protein (APP) and Notch. PSENEN is required for Notch pathway signaling, and for the activity and accumulation of gamma-secretase. Mutations resulting in haploinsufficiency for this gene cause familial acne inversa-2 (ACNINV2).

## Storage

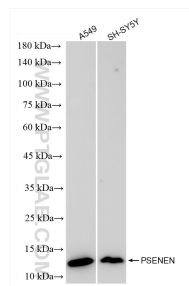
**Storage:**  
Store at -20°C. Stable for one year after shipment.  
**Storage Buffer:**  
PBS with 0.02% sodium azide and 50% glycerol pH 7.3.  
Aliquoting is unnecessary for -20°C storage

\*\*\* 20ul sizes contain 0.1% BSA

For technical support and original validation data for this product please contact:  
T: 1 (888) 4PTGLAB (1-888-478-4522) (toll free in USA), or 1(312) 455-8498 (outside USA)  
E: proteintech@ptglab.com  
W: ptglab.com

This product is exclusively available under Proteintech Group brand and is not available to purchase from any other manufacturer.

## Selected Validation Data



Various lysates were subjected to SDS PAGE followed by western blot with 83818-1-RR (PSENEN antibody) at dilution of 1:5000 incubated at room temperature for 1.5 hours.