

For Research Use Only

CPNE3 Recombinant antibody

Catalog Number: 83820-5-RR



Basic Information

Catalog Number:

83820-5-RR

Size:

100ul, Concentration: 700 ug/ml by Nanodrop;

Source:

Rabbit

Isotype:

IgG

Immunogen Catalog Number:

AG1634

GenBank Accession Number:

BC036242

GeneID (NCBI):

8895

UNIPROT ID:

O75131

Full Name:

copine III

Calculated MW:

60 kDa

Observed MW:

60 kDa

Purification Method:

Protein A purification

CloneNo.:

240871E5

Recommended Dilutions:

WB 1:2000-1:14000

IP 0.5-4.0 ug for 1.0-3.0 mg of total protein lysate

IF/ICC 1:125-1:500

Applications

Tested Applications:

WB, IF/ICC, FC (Intra), IP, ELISA

Species Specificity:

human

Positive Controls:

WB : Y79 cells, HepG2 cells, A431 cells, A549 cells, HeLa cells, HuH-7 cells

IP : HepG2 cells,

IF/ICC : A431 cells,

Background Information

Copines are a family of evolutionarily conserved calcium-dependent phospholipid-binding proteins (PMID: 9430674). They contain two Ca(2+)- and phospholipid-binding domains known as C2 domains. Copines are potentially involved in regulating membrane trafficking and in protein-protein interactions. Copine III (CPNE3) has also been identified as a ligand of ERBB2 and plays an important role in various carcinogenesis. The high expression of CPNE3 is an adverse prognostic biomarker for acute myeloid leukemia (PMID: 28670859).

Storage

Storage:

Store at -20°C. Stable for one year after shipment.

Storage Buffer:

PBS with 0.02% sodium azide and 50% glycerol pH 7.3.

Aliquoting is unnecessary for -20°C storage

*** 20ul sizes contain 0.1% BSA

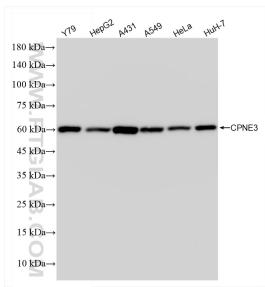
For technical support and original validation data for this product please contact:

T: 1 (888) 4PTGLAB (1-888-478-4522) (toll free in USA), or 1(312) 455-8498 (outside USA)

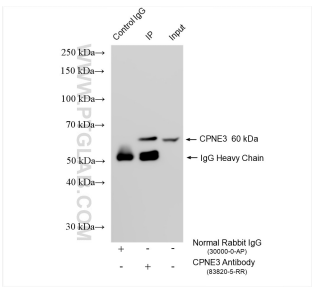
E: proteintech@ptglab.com
W: ptglab.com

This product is exclusively available under Proteintech Group brand and is not available to purchase from any other manufacturer.

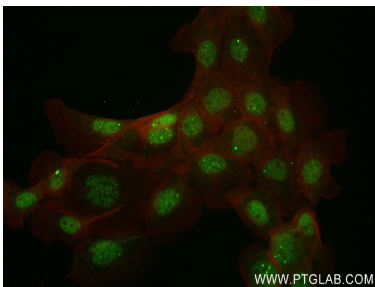
Selected Validation Data



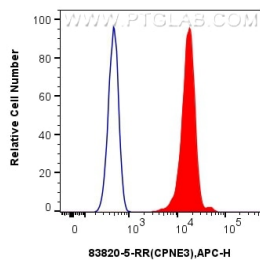
Various lysates were subjected to SDS PAGE followed by western blot with 83820-5-RR (CPNE3 antibody) at dilution of 1:7000 incubated at room temperature for 1.5 hours.



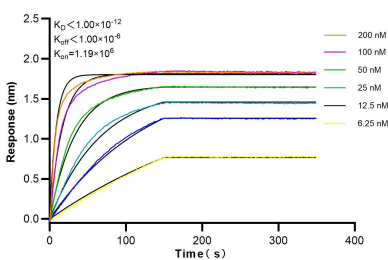
IP result of anti-CPNE3 (IP:83820-5-RR, 4ug; Detection:83820-5-RR 1:2000) with HepG2 cells lysate 1600 ug.



Immunofluorescent analysis of (4% PFA) fixed A431 cells using CPNE3 antibody (83820-5-RR, Clone: 240871E5) at dilution of 1:250 and CoraLite®488-Conjugated Goat Anti-Rabbit IgG(H+L) (SA00013-2), CL594-Phalloidin (red).



1x10⁶ HepG2 cells were intracellularly stained with 0.25 ug CPNE3 Recombinant antibody (83820-5-RR, Clone:240871E5) and APC-Conjugated Goat Anti-Rabbit IgG(H+L)(red), or 0.25 ug Isotype Control (blue). Cells were fixed with 4% PFA and permeabilized with Flow Cytometry Perm Buffer (PF00011-C).



Biolayer interferometry (BLI) kinetic assays of 83820-5-RR against Human CPNE3 were performed. The affinity constant is below 1 pM.