

For Research Use Only

COPS3 Recombinant antibody, PBS Only (Detector)

Catalog Number: 83822-2-PBS



Basic Information

Catalog Number: 83822-2-PBS	GenBank Accession Number: BC001891	Purification Method: Protein A purification
Size: 100ug , Concentration: 1 mg/ml by Nanodrop;	GeneID (NCBI): 8533	CloneNo.: 240918E3
Source: Rabbit	UNIPROT ID: Q9UNS2	
Isotype: IgG	Full Name: COP9 constitutive photomorphogenic homolog subunit 3 (Arabidopsis)	
Immunogen Catalog Number: AG32825	Calculated MW: 48 kDa	
	Observed MW: 46 kDa	

Applications

Tested Applications:
WB, IHC, IF/ICC, IF-P, Cytometric bead array, Indirect ELISA

Species Specificity:
human, mouse, rat

Product Information

83822-2-PBS targets COPS3 as part of a matched antibody pair.

MP00797-1: 83822-4-PBS capture and 83822-2-PBS detection (validated in Cytometric bead array)

Unconjugated rabbit recombinant monoclonal antibody in PBS only (BSA and azide free) storage buffer at a concentration of 1 mg/mL, ready for conjugation. Created using Proteintech's proprietary in-house recombinant technology. Recombinant production enables unrivalled batch-to-batch consistency, easy scale-up, and future security of supply.

This conjugation ready format makes antibodies ideal for use in many applications including: ELISAs, multiplex assays requiring matched pairs, mass cytometry, and multiplex imaging applications. Antibody use should be optimized by the end user for each application and assay.

Background Information

COPS3 possesses kinase activity that phosphorylates regulators involved in signal transduction. It phosphorylates I kappa-Balpa, p105, and c-Jun. It acts as a docking site for complex-mediated phosphorylation. The gene is located within the Smith-Magenis syndrome region on chromosome 17.

Storage

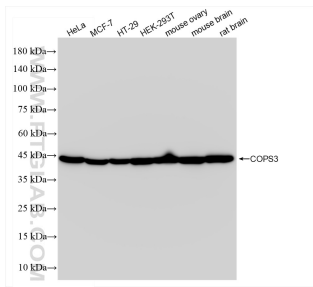
Storage:
Store at -80°C.

Storage Buffer:
PBS Only

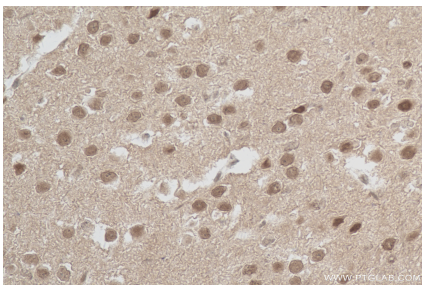
For technical support and original validation data for this product please contact:
T: 1 (888) 4PTGLAB (1-888-478-4522) (toll free in USA), or 1(312) 455-8498 (outside USA)
E: proteintech@ptglab.com
W: ptglab.com

This product is exclusively available under Proteintech Group brand and is not available to purchase from any other manufacturer.

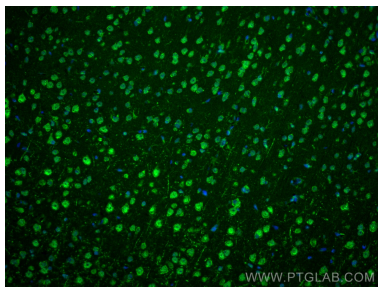
Selected Validation Data



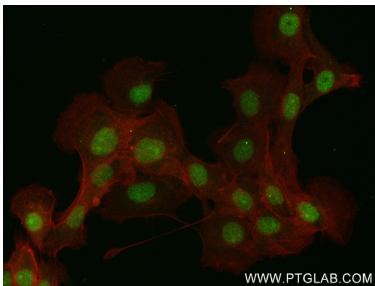
Various lysates were subjected to SDS PAGE followed by western blot with 83822-2-RR (COPS3 antibody) at dilution of 1:10000 incubated at room temperature for 1.5 hours. This data was developed using the same antibody clone with 83822-2-PBS in a different storage buffer formulation.



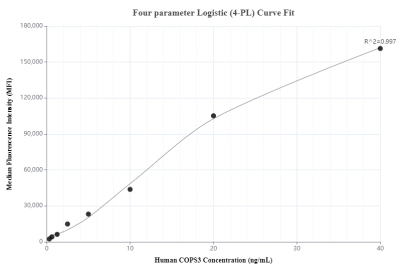
Immunohistochemical analysis of paraffin-embedded mouse brain tissue slide using 83822-2-RR (COPS3 antibody) at dilution of 1:200 (under 40x lens). Heat mediated antigen retrieval with Tris-EDTA buffer (pH 9.0). This data was developed using the same antibody clone with 83822-2-PBS in a different storage buffer formulation.



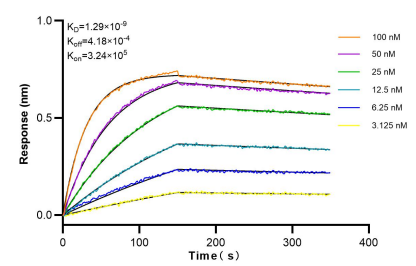
Immunofluorescent analysis of (4% PFA) fixed paraffin-embedded rat brain tissue using COPS3 antibody (83822-2-RR, Clone: 240918E3) at dilution of 1:500 and Multi-rAb CoraLite® Plus 488-Goat Anti-Rabbit Recombinant Secondary Antibody (H+L) (RGAR002). Heat mediated antigen retrieval with Tris-EDTA buffer (pH 9.0). This data was developed using the same antibody clone with 83822-2-PBS in a different storage buffer formulation.



Immunofluorescent analysis of (4% PFA) fixed A431 cells using COPS3 antibody (83822-2-RR, Clone: 240918E3) at dilution of 1:300 and CoraLite®488-Conjugated AffiniPure Goat Anti-Rabbit IgG(H+L) (SA00013-2), CL594-Phalloidin (red). This data was developed using the same antibody clone with 83822-2-PBS in a different storage buffer formulation.



Cytometric bead array standard curve of MP00797-1, COPS3 Recombinant Matched Antibody Pair, PBS Only. Capture antibody: 83822-4-PBS. Detection antibody: 83822-2-PBS. Standard: Ag32825. Range: 0.313-40 ng/mL.



Bilayer interferometry (BLI) kinetic assays of 83822-2-RR against Human COPS3 were performed. The affinity constant is 1.29 nM.