

For Research Use Only

# COPS3 Recombinant antibody

Catalog Number: 83822-2-RR



## Basic Information

|  |   |   |
|--|---|---|
| <b>Catalog Number:</b><br>83822-2-RR                           | <b>GenBank Accession Number:</b><br>BC001891  | <b>Purification Method:</b><br>Protein A purification   |
| <b>Size:</b><br>100ul , Concentration: 1000 ug/ml by Nanodrop; | <b>GeneID (NCBI):</b><br>8533   | <b>CloneNo.:</b><br>240918E3  |
| <b>Source:</b><br>Rabbit                                       | <b>UNIPROT ID:</b><br>Q9UNS2  | <b>Recommended Dilutions:</b><br>WB 1:5000-1:50000<br>IHC 1:50-1:500<br>IF-P 1:250-1:1000<br>IF/ICC 1:150-1:600 |
| <b>Isotype:</b><br>IgG   | <b>Full Name:</b><br>COP9 constitutive photomorphogenic homolog subunit 3 (Arabidopsis) |   |
| <b>Immunogen Catalog Number:</b><br>AG32825                    | <b>Calculated MW:</b><br>48 kDa   |   |
|  | <b>Observed MW:</b><br>46 kDa   |   |

## Applications

|  |  |
|--|--|
| <b>Tested Applications:</b><br>WB, IHC, IF/ICC, IF-P, ELISA  | <b>Positive Controls:</b>  |
| <b>Species Specificity:</b><br>human, mouse, rat   | <b>WB :</b> HeLa cells, MCF-7 cells, HT-29 cells, HEK-293T cells, mouse ovary tissue, mouse brain tissue, rat brain tissue |
| <b>Note-IHC: suggested antigen retrieval with TE buffer pH 9.0; (*) Alternatively, antigen retrieval may be performed with citrate buffer pH 6.0</b> | <b>IHC :</b> mouse brain tissue,<br><b>IF-P :</b> rat brain tissue,<br><b>IF/ICC :</b> A431 cells, HeLa cells              |

## Background Information

COPS3 possesses kinase activity that phosphorylates regulators involved in signal transduction. It phosphorylates I kappa-Balpa, p105, and c-Jun. It acts as a docking site for complex-mediated phosphorylation. The gene is located within the Smith-Magenis syndrome region on chromosome 17.

## Storage

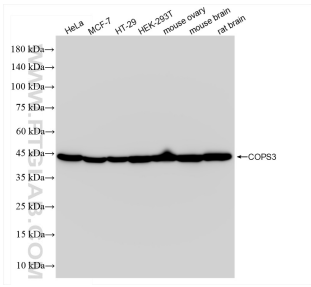
**Storage:**  
Store at -20°C. Stable for one year after shipment.  
**Storage Buffer:**  
PBS with 0.02% sodium azide and 50% glycerol pH 7.3.  
**Aliquoting is unnecessary for -20°C storage**

\*\*\* 20ul sizes contain 0.1% BSA

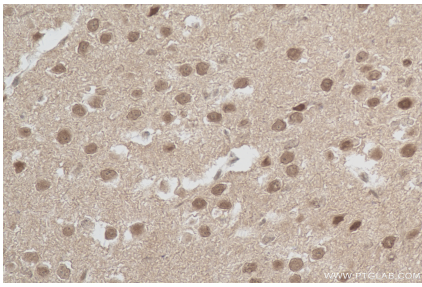
For technical support and original validation data for this product please contact:  
T: 1 (888) 4PTGLAB (1-888-478-4522) (toll free in USA), or 1(312) 455-8498 (outside USA)  
E: [proteintech@ptglab.com](mailto:proteintech@ptglab.com)  
W: [ptglab.com](http://ptglab.com)

This product is exclusively available under Proteintech Group brand and is not available to purchase from any other manufacturer.

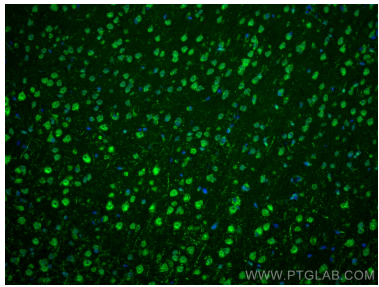
## Selected Validation Data



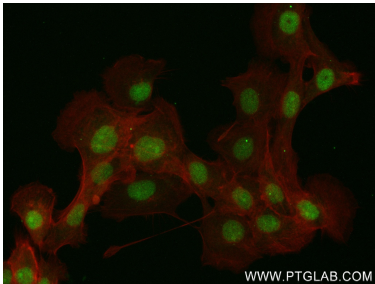
Various lysates were subjected to SDS PAGE followed by western blot with 83822-2-RR (COPS3 antibody) at dilution of 1:10000 incubated at room temperature for 1.5 hours.



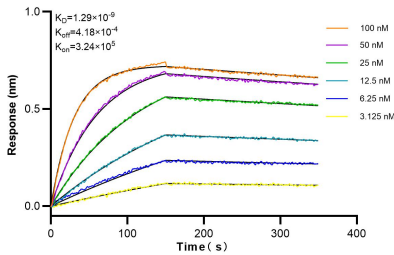
Immunohistochemical analysis of paraffin-embedded mouse brain tissue slide using 83822-2-RR (COPS3 antibody) at dilution of 1:200 (under 40x lens). Heat mediated antigen retrieval with Tris-EDTA buffer (pH 9.0).



Immunofluorescent analysis of (4% PFA) fixed paraffin-embedded rat brain tissue using COPS3 antibody (83822-2-RR, Clone: 240918E3 ) at dilution of 1:500 and Multi-rAb CoraLite® Plus 488-Goat Anti-Rabbit Recombinant Secondary Antibody (H+L) (RGAR002). Heat mediated antigen retrieval with Tris-EDTA buffer (pH 9.0).



Immunofluorescent analysis of (4% PFA) fixed A431 cells using COPS3 antibody (83822-2-RR, Clone: 240918E3 ) at dilution of 1:300 and CoraLite®488-Conjugated AffiniPure Goat Anti-Rabbit IgG(H+L) (SA00013-2), CL594-Phalloidin (red).



Biolayer interferometry (BLI) kinetic assays of 83822-2-RR against Human COPS3 were performed. The affinity constant is 1.29 nM.