

For Research Use Only

CLCA1 Recombinant antibody, PBS Only (Capture/Detector)

Catalog Number: 83829-1-PBS



Basic Information

Catalog Number: 83829-1-PBS	GenBank Accession Number: BC156805	Purification Method: Protein A purification
Size: 100ug , Concentration: 1 mg/ml by Nanodrop;	GeneID (NCBI): 1179	CloneNo.: 240941A11
Source: Rabbit	UNIPROT ID: A8K7I4	
Isotype: IgG	Full Name: chloride channel accessory 1	
Immunogen Catalog Number: AG18176	Calculated MW: 914 aa, 100 kDa	

Applications

Tested Applications:
Cytometric bead array, Sandwich ELISA, Indirect ELISA, Sample test

Species Specificity:
human

Product Information

83829-1-PBS targets CLCA1 as part of a matched antibody pair:

MP00794-1: 83829-4-PBS capture and 83829-1-PBS detection (validated in Cytometric bead array)

MP00794-4: 83829-1-PBS capture and 83829-6-PBS detection (validated in Sandwich ELISA)

Unconjugated rabbit recombinant monoclonal antibody in PBS only (BSA and azide free) storage buffer at a concentration of 1 mg/mL, ready for conjugation. Created using Proteintech's proprietary in-house recombinant technology. Recombinant production enables unrivalled batch-to-batch consistency, easy scale-up, and future security of supply.

This conjugation ready format makes antibodies ideal for use in many applications including: ELISAs, multiplex assays requiring matched pairs, mass cytometry, and multiplex imaging applications. Antibody use should be optimized by the end user for each application and assay.

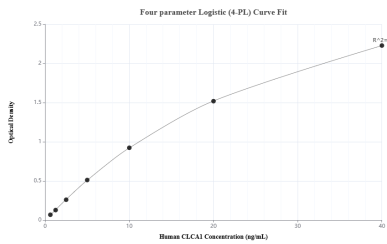
Storage

Storage:
Store at -80°C.
Storage Buffer:
PBS Only

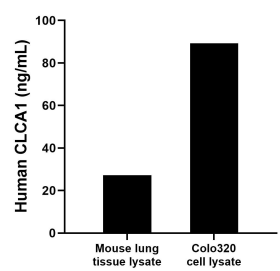
For technical support and original validation data for this product please contact:
T: 1 (888) 4PTGLAB (1-888-478-4522) (toll free in USA), or 1(312) 455-8498 (outside USA)
E: proteintech@ptglab.com
W: ptglab.com

This product is exclusively available under Proteintech Group brand and is not available to purchase from any other manufacturer.

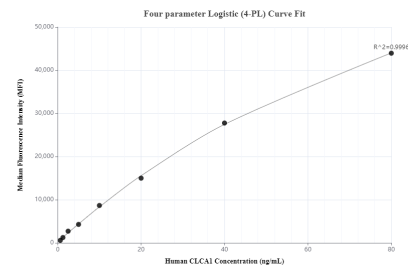
Selected Validation Data



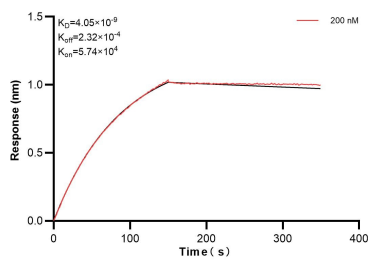
Sandwich ELISA standard curve of MP00794-4, Human CLCA1 Recombinant Matched Antibody Pair - PBS only. 83829-1-PBS was coated to a plate as the capture antibody and incubated with serial dilutions of standard Ag18176. 83829-6-PBS was HRP conjugated as the detection antibody. Range: 0.625-40 ng/mL



Mouse lung tissue lyaste and Colo320 cell lysate were measured. The human CLCA1 concentration of detected samples was determined to be 27.24 ng/mL (based on a 1.9 mg/mL extract load) in mouse lung tissue lyaste and 89.26 ng/mL (based on a 4.8 mg/mL extract load) in Colo320 cell lysate.



Cytometric bead array standard curve of MP00794-1, CLCA1 Recombinant Matched Antibody Pair, PBS Only. Capture antibody: 83829-4-PBS. Detection antibody: 83829-1-PBS. Standard: Ag18176. Range: 0.625-80 ng/mL



Biolayer interferometry (BLI) kinetic assay of 83829-1-PBS against Human CLCA1 was performed. The affinity constant is 4.05 nM.