

For Research Use Only

CLCA1 Recombinant antibody

Catalog Number: 83829-7-RR



Basic Information

Catalog Number: 83829-7-RR	GenBank Accession Number: BC156805	Purification Method: Protein A purification
Size: 100ul , Concentration: 1000 ug/ml by Nanodrop;	GeneID (NCBI): 1179	CloneNo.: 240941G4
Source: Rabbit	UNIPROT ID: A8K7I4	Recommended Dilutions: WB 1:5000-1:50000
Isotype: IgG	Full Name: chloride channel accessory 1	
Immunogen Catalog Number: AG18176	Calculated MW: 914 aa, 100 kDa	
	Observed MW: 50 kDa	

Applications

Tested Applications: WB, ELISA	Positive Controls: WB : SH-SY5Y cells, A431 cells
Species Specificity: human	

Background Information

Calcium-activated chloride channel regulator 1 (CLCA1) is a secreted protein, and it has an N-terminal zinc-dependent metallohydrolase domain with a conserved HEXxE catalytic motif similar to that found in matrix metalloproteases (MMPs), and "a Disintegrin and metalloproteases" (ADAMs). The only known substrate for CLCA1 is CLCA1 itself as it undergoes intracellular autocatalytic cleavage resulting in two cleavage products which are both secreted. Since a previous study suggested that a band around 75kDa, corresponding to the N-terminal autocatalytic cleavage product, was observed in mucus from both human and WT mice. In addition, an additional band at 50kDa was identified in human and WT mouse mucus, suggesting that CLCA1 can be further processed. However, no band corresponding to the full-length un-cleaved CLCA1 could be detected in the human samples, and only a very faint band was observed in WT mouse mucus, indicating that most of the CLCA1 that is secreted into the mucus is fully cleaved in vivo. (PMID: 29885864)

Storage

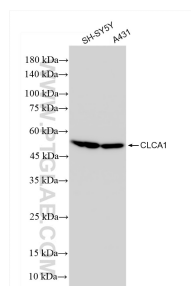
Storage:
Store at -20°C. Stable for one year after shipment.
Storage Buffer:
PBS with 0.02% sodium azide and 50% glycerol pH 7.3.
Aliquoting is unnecessary for -20°C storage

***** 20ul sizes contain 0.1% BSA**

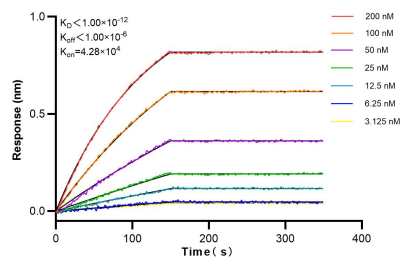
For technical support and original validation data for this product please contact:
T: 1 (888) 4PTGLAB (1-888-478-4522) (toll free in USA), or 1(312) 455-8498 (outside USA)
E: proteintech@ptglab.com
W: ptglab.com

This product is exclusively available under Proteintech Group brand and is not available to purchase from any other manufacturer.

Selected Validation Data



Various lysates were subjected to SDS PAGE followed by western blot with 83829-7-RR (CLCA1 antibody) at dilution of 1:10000 incubated at room temperature for 1.5 hours.



Biolayer interferometry (BLI) kinetic assays of 83829-7-RR against Human CLCA1 were performed. The affinity constant is below 1 pM.