

For Research Use Only

PTPRS Recombinant antibody, PBS Only (Capture/Detector)

Catalog Number: 83833-4-PBS



Basic Information

Catalog Number:

83833-4-PBS

Size:

100ug, Concentration: 1 mg/ml by Nanodrop;

Source:

Rabbit

Isotype:

IgG

GenBank Accession Number:

NM_002850

GeneID (NCBI):

5802

UNIPROT ID:

Q13332

Full Name:

protein tyrosine phosphatase, receptor type, S

Calculated MW:

217 kDa

Purification Method:

Protein A purification

CloneNo.:

241005H7

Applications

Tested Applications:

Cytometric bead array, Sandwich ELISA, Indirect ELISA, Sample test

Species Specificity:

human

Product Information

83833-4-PBS targets PTPRS as part of a matched antibody pair:

MP00820-1: 83833-4-PBS capture and 83833-3-PBS detection (validated in Cytometric bead array)

MP00820-2: 83833-1-PBS capture and 83833-4-PBS detection (validated in Cytometric bead array)

MP00820-4: 83833-4-PBS capture and 83833-1-PBS detection (validated in Sandwich ELISA)

Unconjugated rabbit recombinant monoclonal antibody in PBS only (BSA and azide free) storage buffer at a concentration of 1 mg/mL, ready for conjugation. Created using Proteintech's proprietary in-house recombinant technology. Recombinant production enables unrivalled batch-to-batch consistency, easy scale-up, and future security of supply.

This conjugation ready format makes antibodies ideal for use in many applications including: ELISAs, multiplex assays requiring matched pairs, mass cytometry, and multiplex imaging applications. Antibody use should be optimized by the end user for each application and assay.

Storage

Storage:

Store at -80°C.

Storage Buffer:

PBS Only

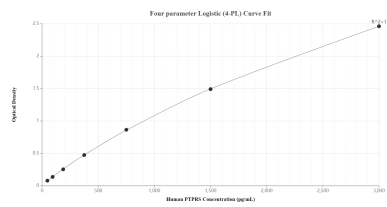
For technical support and original validation data for this product please contact:

T: 1 (888) 4PTGLAB (1-888-478-4522) (toll free in USA), or 1(312) 455-8498 (outside USA)

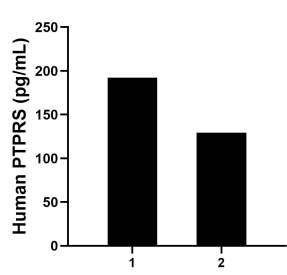
E: proteintech@ptglab.com
W: ptglab.com

This product is exclusively available under Proteintech Group brand and is not available to purchase from any other manufacturer.

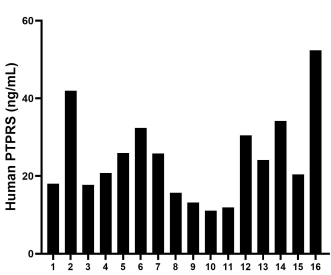
Selected Validation Data



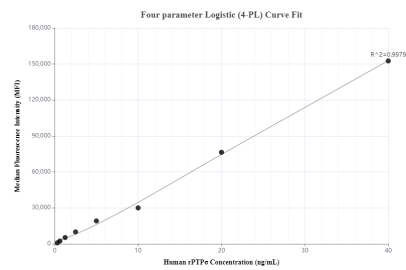
Sandwich ELISA standard curve of MP00820-4, Human PTPRS Recombinant Matched Antibody Pair - PBS only. 83833-4-PBS was coated to a plate as the capture antibody and incubated with serial dilutions of standard Eg0576. 83833-1-PBS was HRP conjugated as the detection antibody. Range: 46.8-3000 pg/mL.



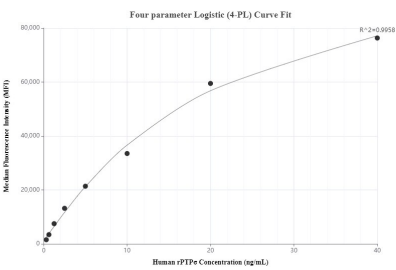
Cerebrospinal fluid of two individual human donors was measured. The PTPRS concentration of detected samples was determined to be 192.2 pg/mL and 129.3 pg/mL, respectively.



Serum of sixteen individual healthy human donors was measured. The PTPRS concentration of detected samples was determined to be 24.8 ng/mL with a range of 15.7 - 42.0 ng/mL.



Cytometric bead array standard curve of MP00820-1, PTPRS Recombinant Matched Antibody Pair, PBS Only. Capture antibody: 83833-4-PBS. Detection antibody: 83833-3-PBS. Standard: Eg0576. Range: 0.313-40 ng/mL.



Cytometric bead array standard curve of MP00820-2, PTPRS Recombinant Matched Antibody Pair, PBS Only. Capture antibody: 83833-1-PBS. Detection antibody: 83833-4-PBS. Standard: Eg0576. Range: 0.313-40 ng/mL.