

For Research Use Only

Fibrillin 1 Recombinant antibody, PBS Only (Detector)

Catalog Number: 83836-1-PBS



Basic Information

Catalog Number:

83836-1-PBS

Size:

100ug, Concentration: 1 mg/ml by Nanodrop;

Source:

Rabbit

Isotype:

IgG

Immunogen Catalog Number:

AG30283

GenBank Accession Number:

BC146854

GeneID (NCBI):

2200

UNIPROT ID:

P35555

Full Name:

fibrillin 1

Purification Method:

Protein A purification

CloneNo.:

240960E5

Applications

Tested Applications:

Cytometric bead array, Sandwich ELISA, Indirect ELISA, Sample test

Species Specificity:

human

Product Information

83836-1-PBS targets Fibrillin 1 as part of a matched antibody pair:

MP00807-1: 83836-2-PBS capture and 83836-1-PBS detection (validated in Cytometric bead array, Sandwich ELISA)

MP00807-2: 83836-3-PBS capture and 83836-1-PBS detection (validated in Cytometric bead array)

Unconjugated rabbit recombinant monoclonal antibody in PBS only (BSA and azide free) storage buffer at a concentration of 1 mg/mL, ready for conjugation. Created using Proteintech's proprietary in-house recombinant technology. Recombinant production enables unrivalled batch-to-batch consistency, easy scale-up, and future security of supply.

This conjugation ready format makes antibodies ideal for use in many applications including: ELISAs, multiplex assays requiring matched pairs, mass cytometry, and multiplex imaging applications. Antibody use should be optimized by the end user for each application and assay.

Storage

Storage:

Store at -80°C.

Storage Buffer:

PBS only

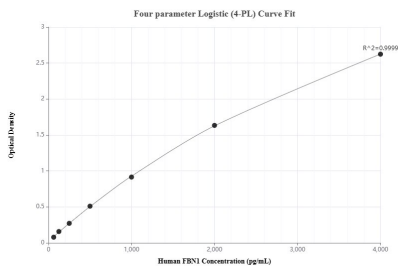
For technical support and original validation data for this product please contact:

T: 1 (888) 4PTGLAB (1-888-478-4522) (toll free in USA), or 1(312) 455-8498 (outside USA)

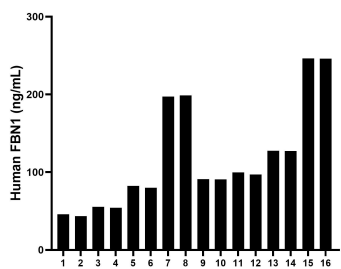
E: proteintech@ptglab.com
W: ptglab.com

This product is exclusively available under Proteintech Group brand and is not available to purchase from any other manufacturer.

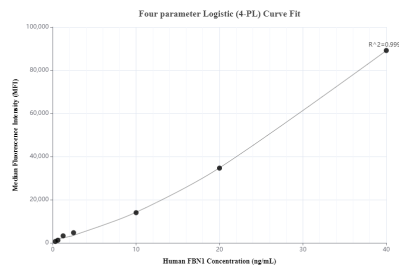
Selected Validation Data



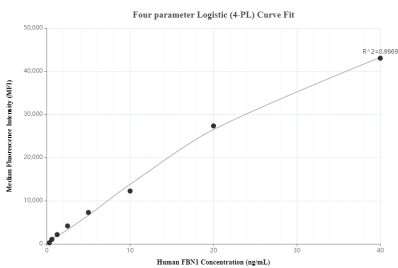
Sandwich ELISA standard curve of MP00807-1, Human Fibrillin 1/FBN1 Recombinant Matched Antibody Pair - PBS only. 83836-2-PBS was coated to a plate as the capture antibody and incubated with serial dilutions of standard Ag30283. 83836-1-PBS was HRP conjugated as the detection antibody. Range: 62.5-4000 pg/mL



Serum of sixteen individual healthy human donors was measured. The human Fibrillin 1/FBN1 concentration of detected samples was determined to be 117.73 ng/mL with a range of 43.48 - 246.44 ng/mL



Cytometric bead array standard curve of MP00807-1, Fibrillin 1/FBN1 Recombinant Matched Antibody Pair, PBS Only. Capture antibody: 83836-2-PBS. Detection antibody: 83836-1-PBS. Standard: Ag30283. Range: 0.313-40 ng/mL



Cytometric bead array standard curve of MP00807-2, Fibrillin 1/FBN1 Recombinant Matched Antibody Pair, PBS Only. Capture antibody: 83836-3-PBS. Detection antibody: 83836-1-PBS. Standard: Ag30283. Range: 0.313-40 ng/mL