

For Research Use Only

# Fibrillin 1 Recombinant antibody

Catalog Number: 83836-4-RR



## Basic Information

Catalog Number:	GenBank Accession Number:	Purification Method:
83836-4-RR	BC146854	Protein A purification
Size:	GeneID (NCBI):	CloneNo.:
100ul , Concentration: 1000 ug/ml by Nanodrop;	2200	240960G12
Source:	UNIPROT ID:	Recommended Dilutions:
Rabbit	P35555	WB 1:5000-1:50000
Isotype:	Full Name:	IHC 1:200-1:800
IgG	fibrillin 1	
Immunogen Catalog Number:	Observed MW:	
AG30283	350 kDa	

## Applications

Tested Applications:	Positive Controls:
WB, IHC, ELISA	WB : HeLa cells,
Species Specificity:	IHC : human stomach cancer tissue,
human	
<b>Note-IHC: suggested antigen retrieval with TE buffer pH 9.0; (*) Alternatively, antigen retrieval may be performed with citrate buffer pH 6.0</b>	

## Background Information

Fibrillin-1 belongs to the fibrillin family. Fibrillins are structural components of 10-12 nm extracellular calcium-binding microfibrils, which occur either in association with elastin or in elastin-free bundles. Fibrillin-1-containing microfibrils provide long-term force bearing structural support. Defects in Fibrillin-1 are a cause of Marfan syndrome (MFS), isolated ectopia lentis (EL), Weill-Marchesani syndrome autosomal dominant (ADWMS), Shprintzen-Goldberg craniosynostosis syndrome (SGS) or MASS syndrome.

## Storage

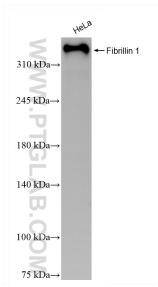
**Storage:**  
Store at -20°C. Stable for one year after shipment.  
**Storage Buffer:**  
PBS with 0.02% sodium azide and 50% glycerol  
Aliquoting is unnecessary for -20°C storage

\*\*\* 20ul sizes contain 0.1% BSA

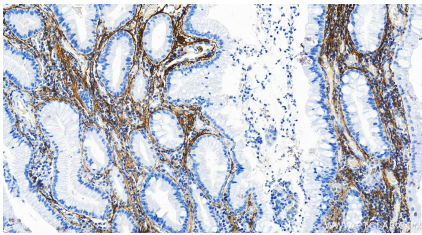
For technical support and original validation data for this product please contact:  
T: 1 (888) 4PTGLAB (1-888-478-4522) (toll free in USA), or 1(312) 455-8498 (outside USA)  
E: [proteintech@ptglab.com](mailto:proteintech@ptglab.com)  
W: [ptglab.com](http://ptglab.com)

This product is exclusively available under Proteintech Group brand and is not available to purchase from any other manufacturer.

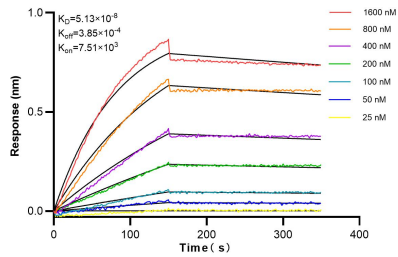
Selected Validation Data



HeLa cells were subjected to SDS PAGE followed by western blot with 83836-4-RR (Fibrillin 1 antibody) at dilution of 1:10000 incubated at room temperature for 1.5 hours.



Immunohistochemical analysis of paraffin-embedded human stomach cancer tissue slide using 83836-4-RR (Fibrillin 1 antibody) at dilution of 1:400 (under 20x lens). Heat mediated antigen retrieval with Tris-EDTA buffer(pH9).



Biolayer interferometry (BLI) kinetic assays of 83836-4-RR against Human Fibrillin 1 were performed. The affinity constant is 51.3 nM.