

For Research Use Only

# TFPI Recombinant antibody, PBS Only (Detector)

Catalog Number: 83838-3-PBS



## Basic Information

<b>Catalog Number:</b> 83838-3-PBS	<b>GenBank Accession Number:</b> NM_006287.6	<b>Purification Method:</b> Protein A purification
<b>Size:</b> 100ug , Concentration: 1 mg/ml by Nanodrop;	<b>GeneID (NCBI):</b> 7035	<b>CloneNo.:</b> 240977D6
<b>Source:</b> Rabbit	<b>UNIPROT ID:</b> P10646-1	
<b>Isotype:</b> IgG	<b>Full Name:</b> tissue factor pathway inhibitor (lipoprotein-associated coagulation inhibitor)	
	<b>Calculated MW:</b> 35 kDa	

## Applications

**Tested Applications:**  
Cytometric bead array, Sandwich ELISA, Indirect ELISA, Sample test

**Species Specificity:**  
human

## Product Information

83838-3-PBS targets TFPI as part of a matched antibody pair:

MP00812-1: 83838-1-PBS capture and 83838-3-PBS detection (validated in Cytometric bead array)

MP00812-4: 83838-6-PBS capture and 83838-3-PBS detection (validated in Sandwich ELISA)

Unconjugated rabbit recombinant monoclonal antibody in PBS only (BSA and azide free) storage buffer at a concentration of 1 mg/mL, ready for conjugation. Created using Proteintech's proprietary in-house recombinant technology. Recombinant production enables unrivalled batch-to-batch consistency, easy scale-up, and future security of supply.

This conjugation ready format makes antibodies ideal for use in many applications including: ELISAs, multiplex assays requiring matched pairs, mass cytometry, and multiplex imaging applications. Antibody use should be optimized by the end user for each application and assay.

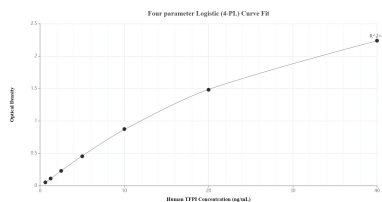
## Storage

**Storage:**  
Store at -80°C.  
**Storage Buffer:**  
PBS Only

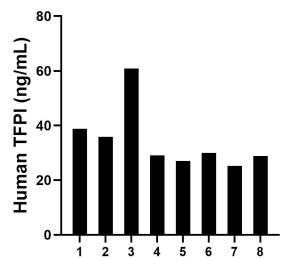
For technical support and original validation data for this product please contact:  
T: 1 (888) 4PTGLAB (1-888-478-4522) (toll free in USA), or 1(312) 455-8498 (outside USA)  
E: [proteintech@ptglab.com](mailto:proteintech@ptglab.com)  
W: [ptglab.com](http://ptglab.com)

This product is exclusively available under Proteintech Group brand and is not available to purchase from any other manufacturer.

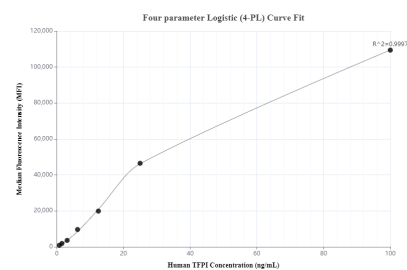
## Selected Validation Data



Sandwich ELISA standard curve of MP00812-4, Human TFPI Recombinant Matched Antibody Pair - PBS only. 83838-6-PBS was coated to a plate as the capture antibody and incubated with serial dilutions of standard Eg0855. 83838-3-PBS was HRP conjugated as the detection antibody. Range: 0.625-40 ng/mL



Serum of eight individual healthy human donors was measured. The TFPI concentration of detected samples was determined to be 34.48 ng/mL with a range of 25.29 - 60.89 ng/mL



Cytometric bead array standard curve of MP00812-1, TFPI Recombinant Matched Antibody Pair, PBS Only. Capture antibody: 83838-1-PBS. Detection antibody: 83838-3-PBS. Standard: Eg0855. Range: 0.781-100 ng/mL