

For Research Use Only

# PKC Alpha Recombinant antibody, PBS Only

Catalog Number: 83840-6-PBS



## Basic Information

<b>Catalog Number:</b> 83840-6-PBS	<b>GenBank Accession Number:</b> BC109274	<b>Purification Method:</b> Protein A purification
<b>Size:</b> 100ug , Concentration: 1 mg/ml by Nanodrop;	<b>GeneID (NCBI):</b> 5578	<b>CloneNo.:</b> 240926E1
<b>Source:</b> Rabbit	<b>UNIPROT ID:</b> P17252	
<b>Isotype:</b> IgG	<b>Full Name:</b> protein kinase C, alpha	
<b>Immunogen Catalog Number:</b> AG1025	<b>Observed MW:</b> 77 kDa	

## Applications

**Tested Applications:**  
WB, IHC, IF/ICC, IF-P, FC (Intra), ELISA

**Species Specificity:**  
human

## Background Information

Protein kinase C (PKC) is a family of serine- and threonine-specific protein kinases that can be activated by calcium and the second messenger diacylglycerol. PKC family members phosphorylate a wide variety of protein targets and are known to be involved in diverse cellular signaling pathways. PKC family members also serve as major receptors for phorbol esters, a class of tumor promoters. Each member of the PKC family has a specific expression profile and is believed to play a distinct role in cells. PRKCA is one of the PKC family members. This kinase has been reported to play roles in many different cellular processes, such as cell adhesion, cell transformation, cell cycle checkpoint, and cell volume control. Knockout studies in mice suggest that this kinase may be a fundamental regulator of cardiac contractility and Ca(2+) handling in myocytes.

## Storage

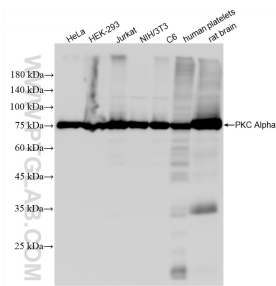
**Storage:**  
Store at -80°C.

**Storage Buffer:**  
PBS Only

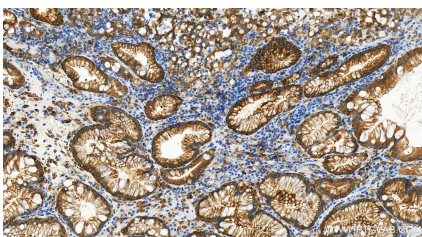
For technical support and original validation data for this product please contact:  
T: 1 (888) 4PTGLAB (1-888-478-4522) (toll free in USA), or 1(312) 455-8498 (outside USA)  
E: [proteintech@ptglab.com](mailto:proteintech@ptglab.com)  
W: [ptglab.com](http://ptglab.com)

This product is exclusively available under Proteintech Group brand and is not available to purchase from any other manufacturer.

Selected Validation Data

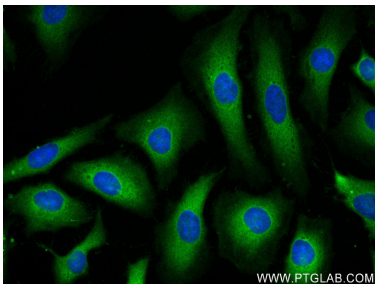


Various lysates were subjected to SDS PAGE followed by western blot with 83840-6-RR (PKC Alpha antibody) at dilution of 1:10000 incubated at room temperature for 1.5 hours. This data was developed using the same antibody clone with 83840-6-PBS in a different storage buffer formulation.

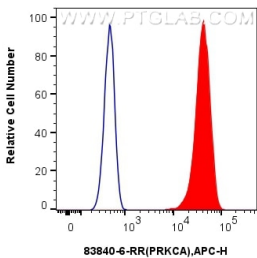


Immunohistochemical analysis of paraffin-embedded human stomach cancer tissue slide using 83840-6-RR (PKC Alpha antibody) at dilution of 1:800 (under 20x lens). Heat mediated antigen retrieval with Tris-EDTA buffer(pH9). This data was developed using the same antibody clone with 83840-6-PBS in a different storage buffer formulation.

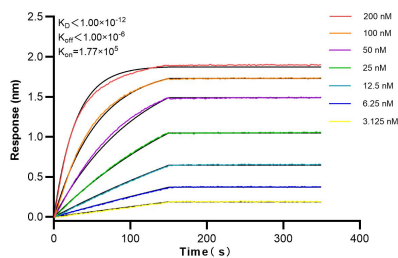
Immunofluorescent analysis of (4% PFA) fixed paraffin-embedded rat eye tissue using PKC Alpha antibody (83840-6-RR, Clone: 240926E1 ) at dilution of 1:400 and CoraLite®594-Conjugated Goat Anti-Rabbit IgG(H+L) (SA00013-4). Heat mediated antigen retrieval with Tris-EDTA buffer (pH 9.0). This data was developed using the same antibody clone with 83840-6-PBS in a different storage buffer formulation.



Immunofluorescent analysis of (-20°C Ethanol) fixed HeLa cells using PRKCA antibody (83840-6-RR, Clone: 240926E1 ) at dilution of 1:250 and CoraLite®488-Conjugated AffiniPure Goat Anti-Rabbit IgG(H+L) (SA00013-2). This data was developed using the same antibody clone with 83840-6-PBS in a different storage buffer formulation.



1x10<sup>6</sup> HepG2 cells were intracellularly stained with 0.25 ug PRKCA Recombinant antibody (83840-6-RR, Clone:240926E1) and APC-Conjugated AffiniPure Goat Anti-Rabbit IgG(H+L)(red), or 0.25 ug Isotype Control (blue). Cells were fixed with 4% PFA and permeabilized with Flow Cytometry Perm Buffer (PF00011-C). This data was developed using the same antibody clone with 83840-6-PBS in a different storage buffer formulation.



Biolayer interferometry (BLI) kinetic assays of 83840-6-RR against Human PRKCA were performed. The affinity constant is below 1 pM.