

For Research Use Only

# TRMT6 Recombinant antibody, PBS Only

Catalog Number: 83843-5-PBS

Featured Product



## Basic Information

Catalog Number:

83843-5-PBS

Size:

100ug , Concentration: 1 mg/ml by Nanodrop;

Source:

Rabbit

Isotype:

IgG

Immunogen Catalog Number:

AG10176

GenBank Accession Number:

BC001262

GeneID (NCBI):

51605

UNIPROT ID:

Q9UJA5

Full Name:

tRNA methyltransferase 6 homolog (S. cerevisiae)

Calculated MW:

56 kDa

Observed MW:

55-60 kDa

Purification Method:

Protein A purification

CloneNo.:

240911C5

## Applications

Tested Applications:

WB, IHC, IF/ICC, ELISA

Species Specificity:

human

## Background Information

Transfer RNA (tRNA) modifications help regulate the efficiency of mRNA translation by maintaining the correct reading frames within mRNA. TRMT6 (tRNA methyltransferase 6 ), also known as GCD10 or TRM6, is a 497 amino acid protein that localizes to the nucleus and exists as a heterodimer with TRM61. Expressed in liver, brain, ovary and testis, TRMT6 functions as a substrate-binding subunit of tRNA and is thought to catalyze the formation of N(1)-methyladenine at position 58 in initiator methionyl-tRNA.

## Storage

Storage:

Store at -80°C.

Storage Buffer:

PBS Only

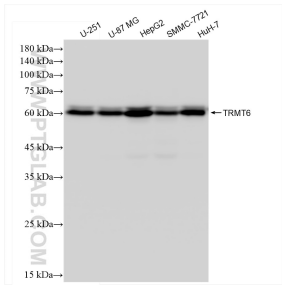
For technical support and original validation data for this product please contact:

T: 1 (888) 4PTGLAB (1-888-478-4522) (toll free in USA), or 1(312) 455-8498 (outside USA)

E: [proteintech@ptglab.com](mailto:proteintech@ptglab.com)  
W: [ptglab.com](http://ptglab.com)

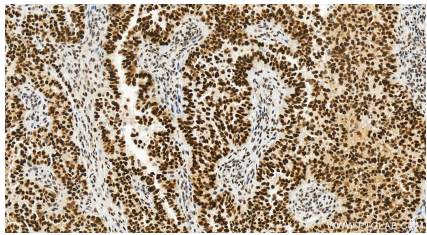
This product is exclusively available under Proteintech Group brand and is not available to purchase from any other manufacturer.

Selected Validation Data

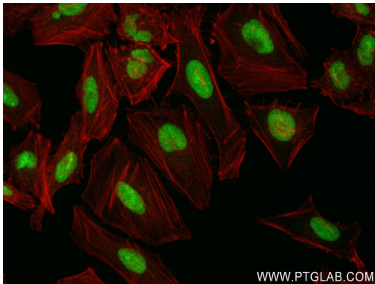


Various lysates were subjected to SDS PAGE followed by western blot with 83843-5-RR (TRMT6 antibody) at dilution of 1:15000 incubated at room temperature for 1.5 hours. This data was developed using the same antibody clone with 83843-5-PBS in a different storage buffer formulation.

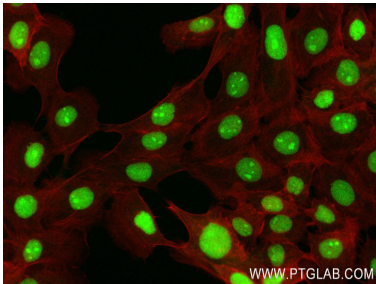
WB result of TRMT6 antibody (83843-5-RR; 1:60000; incubated at room temperature for 1.5 hours) with sh-Control and sh-TRMT6 transfected HepG2 cells. This data was developed using the same antibody clone with 83843-5-PBS in a different storage buffer formulation.



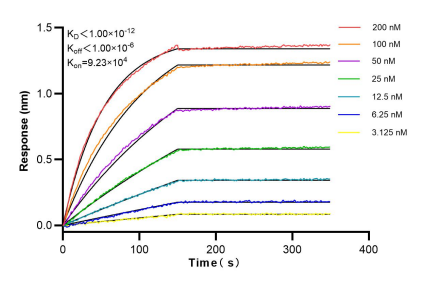
Immunohistochemical analysis of paraffin-embedded human ovarian cancer slide using 83843-5-RR (TRMT6 antibody) at dilution of 1:3000 (under 20x lens). Heat mediated antigen retrieval with Tris-EDTA buffer (pH 9.0). This data was developed using the same antibody clone with 83843-5-PBS in a different storage buffer formulation.



Immunofluorescent analysis of (4% PFA) fixed HeLa cells using TRMT6 antibody (83843-5-RR, Clone: 240911C5 ) at dilution of 1:250 and CoraLite®488-Conjugated AffiniPure Goat Anti-Rabbit IgG(H+L) (SA00013-2), CL594-Phalloidin (red). This data was developed using the same antibody clone with 83843-5-PBS in a different storage buffer formulation.



Immunofluorescent analysis of (4% PFA) fixed A431 cells using TRMT6 antibody (83843-5-RR, Clone: 240911C5 ) at dilution of 1:250 and CoraLite®488-Conjugated AffiniPure Goat Anti-Rabbit IgG(H+L) (SA00013-2), CL594-Phalloidin (red). This data was developed using the same antibody clone with 83843-5-PBS in a different storage buffer formulation.



Biolayer interferometry (BLI) kinetic assays of 83843-5-RR against Human TRMT6 were performed. The affinity constant is below 1 pM.