

For Research Use Only

SLC31A1 Recombinant antibody

Catalog Number: 83844-5-RR

Featured Product



Basic Information

Catalog Number:

83844-5-RR

Size:

100ul, Concentration: 650 ug/ml by Nanodrop;

Source:

Rabbit

Isotype:

IgG

Immunogen Catalog Number:

AG26601

GenBank Accession Number:

BC013611

GeneID (NCBI):

1317

UNIPROT ID:

O15431

Full Name:

solute carrier family 31 (copper transporters), member 1

Calculated MW:

21 kDa

Observed MW:

21-23 kDa

Purification Method:

Protein A purification

CloneNo.:

240868D10

Recommended Dilutions:

WB 1:5000-1:50000

Applications

Tested Applications:

WB, ELISA

Species Specificity:

human

Positive Controls:

WB : HeLa cells, SW480 cells, HepG2 cells

Storage

Storage:

Store at -20°C. Stable for one year after shipment.

Storage Buffer:

PBS with 0.02% sodium azide and 50% glycerol pH 7.3.

Aliquoting is unnecessary for -20°C storage

*** 20ul sizes contain 0.1% BSA

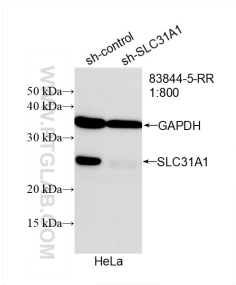
For technical support and original validation data for this product please contact:

T: 1 (888) 4PTGLAB (1-888-478-4522) (toll free in USA), or 1(312) 455-8498 (outside USA)

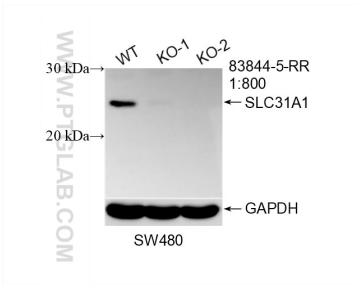
E: proteintech@ptglab.com
W: ptglab.com

This product is exclusively available under Proteintech Group brand and is not available to purchase from any other manufacturer.

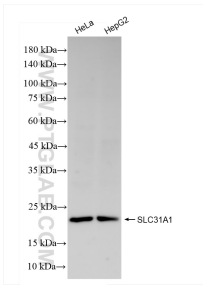
Selected Validation Data



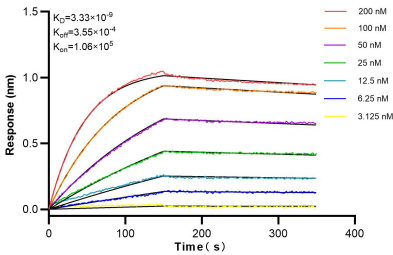
WB result of SLC31A1 antibody (83844-5-RR; 1:800; incubated at room temperature for 1.5 hours) with sh-Control and sh-SLC31A1 transfected HeLa cells.



WB result of SLC31A1 antibody (83844-5-RR; 1:800; room temperature for 1.5 hours) with wild-type and SLC31A1 knockout SW480 cells.



Various lysates were subjected to SDS PAGE followed by western blot with 83844-5-RR (SLC31A1 antibody) at dilution of 1:10000 incubated at room temperature for 1.5 hours.



Biolayer interferometry (BLI) kinetic assays of 83844-5-RR against Human SLC31A1 were performed. The affinity constant is 3.33 nM.