

For Research Use Only

# CLUAP1 Recombinant antibody

Catalog Number: 83849-3-RR



## Basic Information

<b>Catalog Number:</b> 83849-3-RR	<b>GenBank Accession Number:</b> BC017070	<b>Purification Method:</b> Protein A purification
<b>Size:</b> 100ul , Concentration: 1000 ug/ml by Nanodrop;	<b>GeneID (NCBI):</b> 23059	<b>CloneNo.:</b> 240854C10
<b>Source:</b> Rabbit	<b>UNIPROT ID:</b> Q96AJ1	<b>Recommended Dilutions:</b> WB 1:5000-1:50000
<b>Isotype:</b> IgG	<b>Full Name:</b> clusterin associated protein 1	
<b>Immunogen Catalog Number:</b> AG11419	<b>Calculated MW:</b> 413 aa, 48 kDa	
	<b>Observed MW:</b> 60 kDa	

## Applications

<b>Tested Applications:</b> WB, ELISA	<b>Positive Controls:</b>
<b>Species Specificity:</b> human	<b>WB :</b> Y79 cells, HepG2 cells, COLO 320 cells, HeLa cells, BxPC-3 cells

## Background Information

CLUAP1 (Clusterin-associated protein 1) was originally identified as a protein that interacts with CLU/clusterin, and whose gene is frequently upregulated in colon cancer (PMID: 15480429). Overexpression of CLUAP1 was also observed in osteosarcoma (PMID: 17203229). CLUAP1 is most abundantly expressed in the testis among normal tissues (PMID: 15480429; 17203229). Studies reveal that CLUAP1 has a role in ciliogenesis and cilia-dependent development (PMID: 23351563; 23742838; 24970261).

## Storage

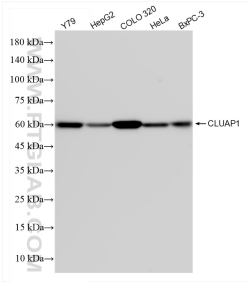
**Storage:**  
Store at -20°C. Stable for one year after shipment.  
**Storage Buffer:**  
PBS with 0.02% sodium azide and 50% glycerol pH 7.3.  
**Aliquoting is unnecessary for -20°C storage**

\*\*\* 20ul sizes contain 0.1% BSA

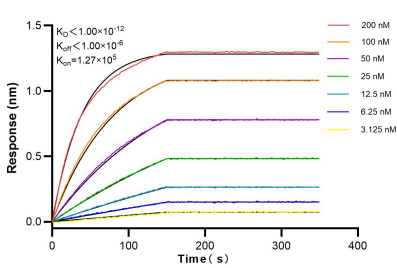
For technical support and original validation data for this product please contact:  
T: 1 (888) 4PTGLAB (1-888-478-4522) (toll free in USA), or 1(312) 455-8498 (outside USA)  
E: [proteintech@ptglab.com](mailto:proteintech@ptglab.com)  
W: [ptglab.com](http://ptglab.com)

This product is exclusively available under Proteintech Group brand and is not available to purchase from any other manufacturer.

Selected Validation Data



Various lysates were subjected to SDS PAGE followed by western blot with 83849-3-RR (CLUAP1 antibody) at dilution of 1:10000 incubated at room temperature for 1.5 hours.



Biolayer interferometry (BLI) kinetic assays of 83849-3-RR against Human CLUAP1 were performed. The affinity constant is below 1 pM.