

For Research Use Only

# Rat Lipocalin-2/NGAL Recombinant antibody, PBS Only (Capture)

Catalog Number: 83853-4-PBS



## Basic Information

### Catalog Number:

83853-4-PBS

### Size:

100ug, Concentration: 1 mg/ml by Nanodrop;

### Source:

Rabbit

### Isotype:

IgG

### GenBank Accession Number:

#### GeneID (NCBI):

170496

#### UNIPROT ID:

P30152

#### Full Name:

Lipocalin 2

#### Calculated MW:

22kDa

### Purification Method:

Protein A purification

### CloneNo.:

240792E8

## Applications

### Tested Applications:

Cytometric bead array, Sandwich ELISA, Indirect ELISA, Sample test

### Species Specificity:

rat

## Product Information

83853-4-PBS targets Lipocalin-2/NGAL as part of a matched antibody pair:

MP00790-1: 83853-4-PBS capture and 83853-3-PBS detection (validated in Cytometric bead array)

MP00790-2: 83853-4-PBS capture and 83853-1-PBS detection (validated in Cytometric bead array)

MP00790-4: 83853-4-PBS capture and 83853-5-PBS detection (validated in Sandwich ELISA)

Unconjugated rabbit recombinant monoclonal antibody in PBS only (BSA and azide free) storage buffer at a concentration of 1 mg/mL, ready for conjugation. Created using Proteintech's proprietary in-house recombinant technology. Recombinant production enables unrivalled batch-to-batch consistency, easy scale-up, and future security of supply.

This conjugation ready format makes antibodies ideal for use in many applications including: ELISAs, multiplex assays requiring matched pairs, mass cytometry, and multiplex imaging applications. Antibody use should be optimized by the end user for each application and assay.

## Storage

### Storage:

Store at -80°C.

### Storage Buffer:

PBS only, pH7.3

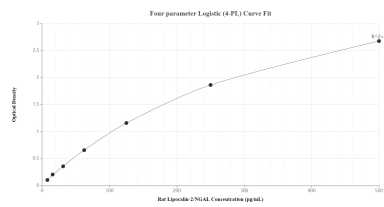
For technical support and original validation data for this product please contact:

T: 1 (888) 4PTGLAB (1-888-478-4522) (toll free in USA), or 1(312) 455-8498 (outside USA)

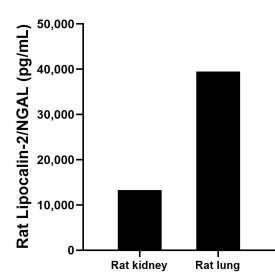
E: [proteintech@ptglab.com](mailto:proteintech@ptglab.com)  
W: [ptglab.com](http://ptglab.com)

This product is exclusively available under Proteintech Group brand and is not available to purchase from any other manufacturer.

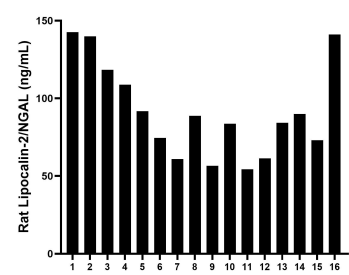
Selected Validation Data



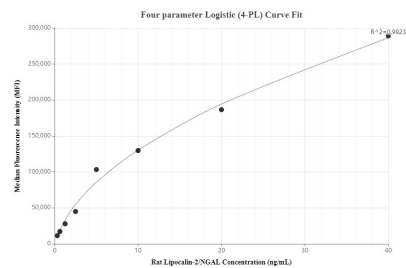
Sandwich ELISA standard curve of MP00790-4, Rat Lipocalin-2/NGAL Recombinant Matched Antibody Pair - PBS only. 83853-4-PBS was coated to a plate as the capture antibody and incubated with serial dilutions of standard Eg1022. 83853-5-PBS was HRP conjugated as the detection antibody. Range: 7.8-500 pg/mL



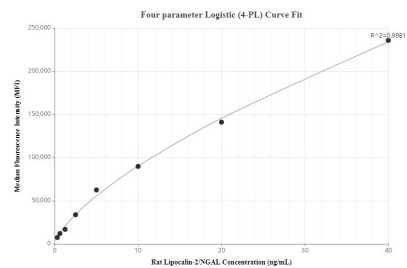
The mean Lipocalin-2/NGAL concentration was determined to be 13,314.6 pg/mL in rat kidney tissue extract based on a 2.0 mg/mL extract load and 39,497.5 pg/mL in rat lung tissue extract based on a 1.0 mg/mL extract load.



Serum of sixteen rats was measured. The Lipocalin-2/NGAL concentration of detected samples was determined to be 91.9 ng/mL with a range of 54.4 - 142.6 ng/mL.



Cytometric bead array standard curve of MP00790-1, RAT Lipocalin-2/NGAL Recombinant Matched Antibody Pair, PBS Only. Capture antibody: 83853-4-PBS. Detection antibody: 83853-3-PBS. Standard: Eg1022. Range: 0.313-40 ng/mL



Cytometric bead array standard curve of MP00790-2, RAT Lipocalin-2/NGAL Recombinant Matched Antibody Pair, PBS Only. Capture antibody: 83853-4-PBS. Detection antibody: 83853-1-PBS. Standard: Eg1022. Range: 0.313-40 ng/mL