

For Research Use Only

SOD1 Recombinant antibody, PBS Only

Catalog Number: 83857-6-PBS



Basic Information

Catalog Number:

83857-6-PBS

Size:

100ug, Concentration: 1 mg/ml by Nanodrop;

Source:

Rabbit

Isotype:

IgG

GenBank Accession Number:

NM_000454.5

GeneID (NCBI):

6647

UNIPROT ID:

P00441

Full Name:

superoxide dismutase 1, soluble

Calculated MW:

16kDa

Observed MW:

16-20 kDa

Purification Method:

Protein A purification

CloneNo.:

240888B9

Applications

Tested Applications:

WB, Indirect ELISA

Species Specificity:

human

Background Information

Superoxide dismutase 1, soluble (amyotrophic lateral sclerosis 1 (adult)) (SOD1, synonyms: ALS, SOD, ALS1, IPOA) binds copper and zinc ions and is one of two isozymes responsible for destroying free uperoxide radicals in the body. This isozyme is a soluble cytoplasmic protein, acting as a homodimer to convert naturally-occurring but harmful superoxide radicals to molecular oxygen and hydrogen peroxide. The other isozyme is a mitochondrial protein. Mutations in this gene have been implicated as causes of familial amyotrophic lateral sclerosis.

Storage

Storage:

Store at -80°C.

Storage Buffer:

PBS Only

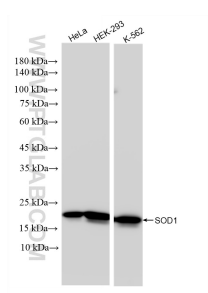
For technical support and original validation data for this product please contact:

T: 1 (888) 4PTGLAB (1-888-478-4522) (toll free in USA), or 1(312) 455-8498 (outside USA)

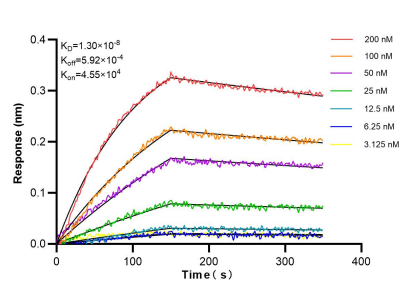
E: proteintech@ptglab.com
W: ptglab.com

This product is exclusively available under Proteintech Group brand and is not available to purchase from any other manufacturer.

Selected Validation Data



Various lysates were subjected to SDS PAGE followed by western blot with 83857-6-RR (SOD1 antibody) at dilution of 1:10000 incubated at room temperature for 1.5 hours. This data was developed using the same antibody clone with 83857-6-PBS in a different storage buffer formulation.



Biolayer interferometry (BLI) kinetic assays of 83857-6-RR against Human SOD1 were performed. The affinity constant is 13.0 nM.