

For Research Use Only

RPE65 Recombinant antibody, PBS Only



Catalog Number: **83861-1-PBS**

Basic Information

Catalog Number: 83861-1-PBS	GenBank Accession Number: BC075036	Purification Method: Protein A purification
Size: 100ug, Concentration: 1 mg/ml by Nanodrop;	GeneID (NCBI): 6121	CloneNo.: 240518F1
Source: Rabbit	UNIPROT ID: Q16518	
Isotype: IgG	Full Name: retinal pigment epithelium-specific protein 65kDa	
Immunogen Catalog Number: AG12356	Calculated MW: 61 kDa	

Applications

Tested Applications:
ELISA, WB

Species Specificity:
human

Storage

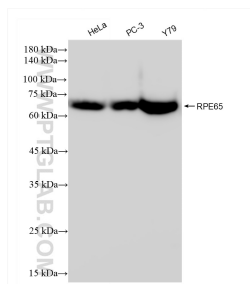
Storage:
Store at -80°C.

Storage Buffer:
PBS Only

For technical support and original validation data for this product please contact:
T: 1 (888) 4PTGLAB (1-888-478-4522) (toll free in USA), or 1(312) 455-8498 (outside USA)
E: proteintech@ptglab.com
W: ptglab.com

This product is exclusively available under Proteintech Group brand and is not available to purchase from any other manufacturer.

Selected Validation Data



Various lysates were subjected to SDS PAGE followed by western blot with 83861-1-RR (RPE65 antibody) at dilution of 1:10000 incubated at room temperature for 1.5 hours. This data was developed using the same antibody clone with 83861-1-PBS in a different storage buffer formulation.