

For Research Use Only

RPE65 Recombinant antibody

Catalog Number: 83861-1-RR



Basic Information

Catalog Number: 83861-1-RR	GenBank Accession Number: BC075036	Purification Method: Protein A purification
Size: 100ul , Concentration: 1000 ug/ml by Nanodrop;	GeneID (NCBI): 6121	CloneNo.: 240518F1
Source: Rabbit	UNIPROT ID: Q16518	Recommended Dilutions: WB 1:5000-1:50000
Isotype: IgG	Full Name: retinal pigment epithelium-specific protein 65kDa	
Immunogen Catalog Number: AG12356	Calculated MW: 61 kDa	
	Observed MW: 65 kDa, 61 kDa	

Applications

Tested Applications: WB, ELISA	Positive Controls: WB : HeLa cells, PC-3 cells, Y79 cells
Species Specificity: human	

Background Information

RPE65(Retinal pigment epithelium-specific 65 kDa protein) is also named as retinoid isomerohydrolase with the calculated molecular weight of 61 kDa and belongs to the carotenoid oxygenase family. It is a microsomal protein with isomerase activity in the retinoid visual cycle that playing a role in the isomerisation of all-trans (vitamin A) to 11-cis retinal, the chromophore of the visual pigments. It also might be involved in retinoid uptake of keratinocytes.

Storage

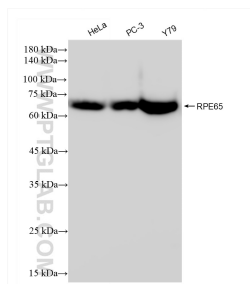
Storage:
Store at -20°C. Stable for one year after shipment.
Storage Buffer:
PBS with 0.02% sodium azide and 50% glycerol pH 7.3.
Aliquoting is unnecessary for -20°C storage

*** 20ul sizes contain 0.1% BSA

For technical support and original validation data for this product please contact:
T: 1 (888) 4PTGLAB (1-888-478-4522) (toll free in USA), or 1(312) 455-8498 (outside USA)
E: proteintech@ptglab.com
W: ptglab.com

This product is exclusively available under Proteintech Group brand and is not available to purchase from any other manufacturer.

Selected Validation Data



Various lysates were subjected to SDS PAGE followed by western blot with 83861-1-RR (RPE65 antibody) at dilution of 1:10000 incubated at room temperature for 1.5 hours.