

For Research Use Only

FIP1L1 Recombinant antibody, PBS Only

Catalog Number: 83863-2-PBS

Featured Product



Basic Information

Catalog Number:

83863-2-PBS

Size:

100ug , Concentration: 1 mg/ml by Nanodrop;

Source:

Rabbit

Isotype:

IgG

Immunogen Catalog Number:

AG2921

GenBank Accession Number:

BC017724

GeneID (NCBI):

81608

UNIPROT ID:

Q6UN15

Full Name:

FIP1 like 1 (S. cerevisiae)

Calculated MW:

594 aa, 66 kDa

Observed MW:

67-80 kDa

Purification Method:

Protein A purification

CloneNo.:

240658C4

Applications

Tested Applications:

WB, FC (Intra), ELISA

Species Specificity:

human, mouse

Background Information

FIP1L1, also known as FIP1, encodes a subunit of the CPSF (cleavage and polyadenylation specificity factor) complex that polyadenylates the 3' end of mRNA precursors. The FIP1L1-PDGFR fusion gene encodes a constitutively activated tyrosine kinase that links the first 233 amino acids of FIP1L1 to the last 523 amino acids of PDGFR. This gene fusion and chromosomal deletion causes some forms of idiopathic hypereosinophilic syndrome (HES) (PMID: 12660384).

Storage

Storage:

Store at -80°C.

Storage Buffer:

PBS only, pH7.3

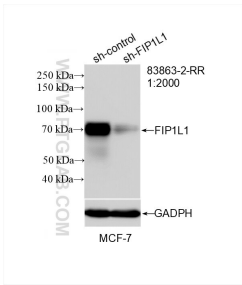
For technical support and original validation data for this product please contact:

T: 1 (888) 4PTGLAB (1-888-478-4522) (toll free in USA), or 1(312) 455-8498 (outside USA)

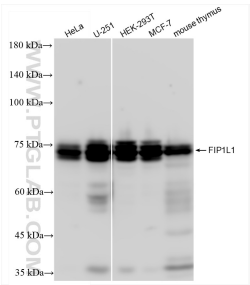
E: proteintech@ptglab.com
W: ptglab.com

This product is exclusively available under Proteintech Group brand and is not available to purchase from any other manufacturer.

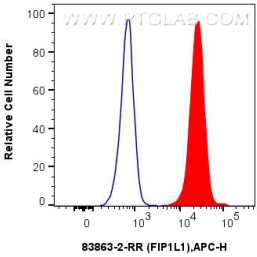
Selected Validation Data



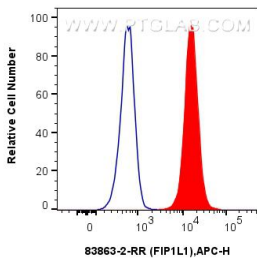
WB result of FIP1L1 antibody (83863-2-RR; 1:2000; incubated at room temperature for 1.5 hours) with sh-Control and sh-FIP1L1 transfected MCF-7 cells. This data was developed using the same antibody clone with 83863-2-PBS in a different storage buffer formulation.



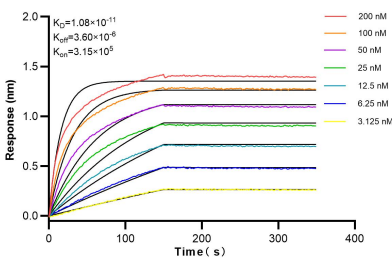
Various lysates were subjected to SDS PAGE followed by western blot with 83863-2-RR (FIP1L1 antibody) at dilution of 1:7500 incubated at room temperature for 1.5 hours. This data was developed using the same antibody clone with 83863-2-PBS in a different storage buffer formulation.



1x10⁶ A549 cells were intracellularly stained with 0.25 ug FIP1L1 Recombinant antibody (83863-2-RR, Clone:240658C4) and APC-Conjugated AffiniPure Goat Anti-Rabbit IgG(H+L)(red), or 0.25 ug Isotype Control (blue). Cells were fixed and permeabilized with True-Nuclear Transcription Factor Buffer Set. This data was developed using the same antibody clone with 83863-2-PBS in a different storage buffer formulation.



1x10⁶ U-2 OS were intracellularly stained with 0.25 ug FIP1L1 Recombinant antibody (83863-2-RR, Clone:240658C4) and APC-Conjugated AffiniPure Goat Anti-Rabbit IgG(H+L)(red), or 0.25 ug Isotype Control (blue). Cells were fixed and permeabilized with True-Nuclear Transcription Factor Buffer Set. This data was developed using the same antibody clone with 83863-2-PBS in a different storage buffer formulation.



Biolayer interferometry (BLI) kinetic assays of 83863-2-RR against Human FIP1L1 were performed. The affinity constant is 10.8 pM.