

For Research Use Only

# FIP1L1 Recombinant antibody

Catalog Number: 83863-3-RR



## Basic Information

<b>Catalog Number:</b> 83863-3-RR	<b>GenBank Accession Number:</b> BC017724	<b>Purification Method:</b> Protein A purification
<b>Size:</b> 100ul , Concentration: 1000 ug/ml by Nanodrop;	<b>GeneID (NCBI):</b> 81608	<b>CloneNo.:</b> 240658A8
<b>Source:</b> Rabbit	<b>UNIPROT ID:</b> Q6UN15	<b>Recommended Dilutions:</b> IHC 1:250-1:1000 IF/ICC 1:125-1:500
<b>Isotype:</b> IgG	<b>Full Name:</b> FIP1 like 1 (S. cerevisiae)	
<b>Immunogen Catalog Number:</b> AG2921	<b>Calculated MW:</b> 594 aa, 66 kDa	

## Applications

<b>Tested Applications:</b> IHC, IF/ICC, FC (Intra), ELISA	<b>Positive Controls:</b>
<b>Species Specificity:</b> human	<b>IHC :</b> human ovary cancer tissue, <b>IF/ICC :</b> MCF-7 cells,

**Note-IHC:** suggested antigen retrieval with **TE buffer pH 9.0; (\*) Alternatively, antigen retrieval may be performed with citrate buffer pH 6.0**

## Background Information

FIP1L1, also known as FIP1, encodes a subunit of the CPSF (cleavage and polyadenylation specificity factor) complex that polyadenylates the 3' end of mRNA precursors. The FIP1L1-PDGFR fusion gene encodes a constitutively activated tyrosine kinase that links the first 233 amino acids of FIP1L1 to the last 523 amino acids of PDGFR. This gene fusion and chromosomal deletion causes some forms of idiopathic hypereosinophilic syndrome (HES) (PMID: 12660384).

## Storage

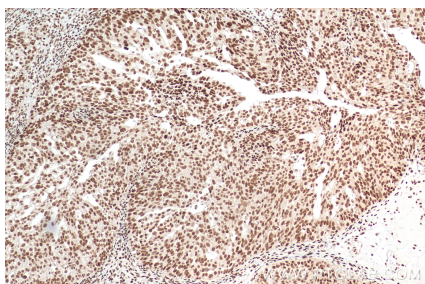
**Storage:**  
Store at -20°C. Stable for one year after shipment.  
**Storage Buffer:**  
PBS with 0.02% sodium azide and 50% glycerol pH 7.3.  
**Aliquoting is unnecessary for -20°C storage**

**\*\*\* 20ul sizes contain 0.1% BSA**

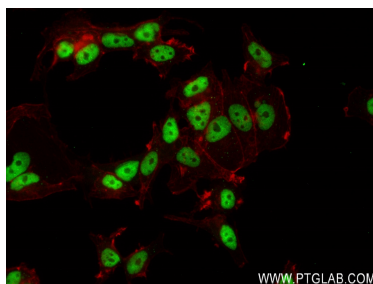
For technical support and original validation data for this product please contact:  
T: 1 (888) 4PTGLAB (1-888-478-4522) (toll free in USA), or 1(312) 455-8498 (outside USA)  
E: proteintech@ptglab.com  
W: ptglab.com

This product is exclusively available under Proteintech Group brand and is not available to purchase from any other manufacturer.

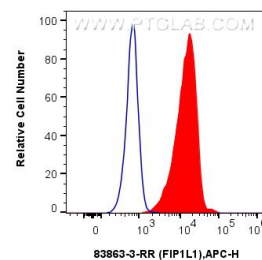
## Selected Validation Data



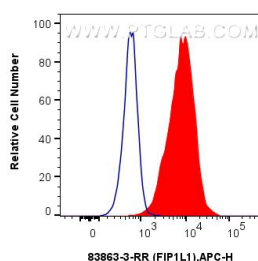
Immunohistochemical analysis of paraffin-embedded human ovary cancer tissue slide using 83863-3-RR (FIP1L1 antibody) at dilution of 1:500 (under 10x lens). Heat mediated antigen retrieval with Tris-EDTA buffer (pH 9.0).



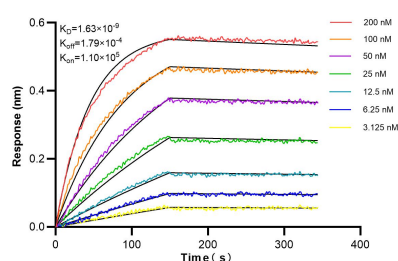
Immunofluorescent analysis of (4% PFA) fixed MCF-7 cells using FIP1L1 antibody (83863-3-RR, Clone: 240658A8) at dilution of 1:250 and CoraLite®488-Conjugated AffiniPure Goat Anti-Rabbit IgG(H+L) (SA00013-2), CL594-Phalloidin (red).



$1 \times 10^6$  A549 cells were intracellularly stained with 0.25  $\mu$ g FIP1L1 Recombinant antibody (83863-3-RR, Clone:240658A8) and APC-Conjugated AffiniPure Goat Anti-Rabbit IgG(H+L)(red), or 0.25  $\mu$ g Isotype Control (blue). Cells were fixed and permeabilized with True-Nuclear Transcription Factor Buffer Set.



$1 \times 10^6$  U-2 OS were intracellularly stained with 0.25  $\mu$ g FIP1L1 Recombinant antibody (83863-3-RR, Clone:240658A8) and APC-Conjugated AffiniPure Goat Anti-Rabbit IgG(H+L)(red), or 0.25  $\mu$ g Isotype Control (blue). Cells were fixed and permeabilized with True-Nuclear Transcription Factor Buffer Set.



Biolayer interferometry (BLI) kinetic assays of 83863-3-RR against Human FIP1L1 were performed. The affinity constant is 1.63 nM.