

For Research Use Only

CAMSAP1 Recombinant antibody

Catalog Number: 83864-1-RR



Basic Information

Catalog Number:

83864-1-RR

Size:

100ul , Concentration: 1000 ug/ml by
Nanodrop;

Source:

Rabbit

Isotype:

IgG

GenBank Accession Number:

BC144082

GeneID (NCBI):

157922

UNIPROT ID:

Q5T5Y3

Full Name:

calmodulin regulated spectrin-
associated protein 1

Calculated MW:

179 kDa

Observed MW:

150-160 kDa

Purification Method:

Protein A purification

CloneNo.:

240633H1

Recommended Dilutions:

WB 1:1000-1:6000

IF/ICC 1:50-1:500

Applications

Tested Applications:

WB, IF/ICC, ELISA

Species Specificity:

human, mouse

Positive Controls:

WB : MCF-7 cells, Neuro-2a cells

IF/ICC : Neuro-2a cells,

Background Information

There are three members in the CAMSAP family of mammals, namely CAMSAP1-3. Despite having similar structures, these proteins have different distribution patterns within intracellular spaces and tissues. CAMSAP1 (Calmodulin-regulated spectrin-associated protein 1) is mainly expressed in nervous tissue, testis, and liver (PMID: 37903275).

Storage

Storage:

Store at -20°C. Stable for one year after shipment.

Storage Buffer:

PBS with 0.02% sodium azide and 50% glycerol pH 7.3.

Aliquoting is unnecessary for -20°C storage

*** 20ul sizes contain 0.1% BSA

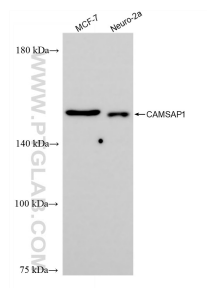
For technical support and original validation data for this product please contact:

T: 1 (888) 4PTGLAB (1-888-478-4522) (toll free
in USA), or 1(312) 455-8498 (outside USA)

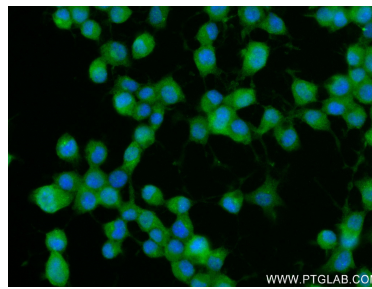
E: proteintech@ptglab.com
W: ptglab.com

This product is exclusively available under Proteintech Group brand and is not available to purchase from any other manufacturer.

Selected Validation Data



Various lysates were subjected to SDS PAGE followed by western blot with 83864-1-RR (CAMSAP1 antibody) at dilution of 1:3000 incubated at room temperature for 1.5 hours.



Immunofluorescent analysis of (4% PFA) fixed Neuro-2a cells using CAMSAP1 antibody (83864-1-RR, Clone: 240633H1) at dilution of 1:200 and CoraLite®488-Conjugated Goat Anti-Rabbit IgG(H+L) (SA00013-2).