

For Research Use Only

NCR3/NKp30 Recombinant antibody, PBS Only (Capture)

Catalog Number: 83882-4-PBS



Basic Information

Catalog Number: 83882-4-PBS	GenBank Accession Number: BC052582	Purification Method: Protein A purification
Size: 100ug , Concentration: 1 mg/ml by Nanodrop;	GeneID (NCBI): 259197	CloneNo.: 240809G11
Source: Rabbit	UNIPROT ID: O14931	
Isotype: IgG	Full Name: natural cytotoxicity triggering receptor 3	
	Calculated MW: 201 aa, 22 kDa	

Applications

Tested Applications:
Cytometric bead array, Sandwich ELISA, Indirect ELISA, Sample test

Species Specificity:
human

Product Information

83882-4-PBS targets NCR3/NKp30 as part of a matched antibody pair:

MP00833-1: 83882-4-PBS capture and 83882-2-PBS detection (validated in Cytometric bead array)

MP00833-4: 83882-4-PBS capture and 83882-5-PBS detection (validated in Sandwich ELISA)

Unconjugated rabbit recombinant monoclonal antibody in PBS only (BSA and azide free) storage buffer at a concentration of 1 mg/mL, ready for conjugation. Created using Proteintech's proprietary in-house recombinant technology. Recombinant production enables unrivalled batch-to-batch consistency, easy scale-up, and future security of supply.

This conjugation ready format makes antibodies ideal for use in many applications including: ELISAs, multiplex assays requiring matched pairs, mass cytometry, and multiplex imaging applications. Antibody use should be optimized by the end user for each application and assay.

Storage

Storage:
Store at -80°C.

Storage Buffer:
PBS Only

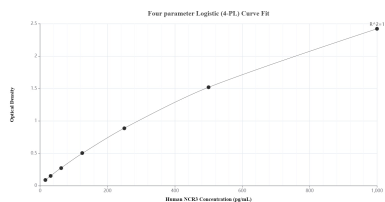
For technical support and original validation data for this product please contact:

T: 1 (888) 4PTGLAB (1-888-478-4522) (toll free in USA), or 1(312) 455-8498 (outside USA)

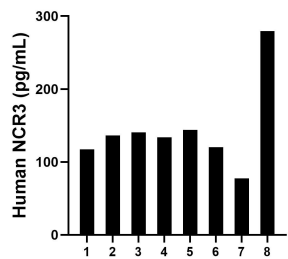
E: proteintech@ptglab.com
W: ptglab.com

This product is exclusively available under Proteintech Group brand and is not available to purchase from any other manufacturer.

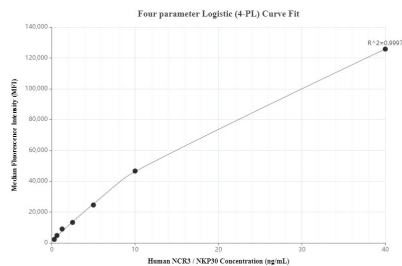
Selected Validation Data



Sandwich ELISA standard curve of MP00833-4, Human NCR3/NKp30 Recombinant Matched Antibody Pair - PBS only. 83882-4-PBS was coated to a plate as the capture antibody and incubated with serial dilutions of standard Eg31663. 83882-5-PBS was HRP conjugated as the detection antibody. Range: 15.6-1000 pg/mL



Serum of eight individual healthy human donors was measured. The NCR3 concentration of detected samples was determined to be 143.6 pg/mL with a range of 77.4 - 279.5 pg/mL.



Cytometric bead array standard curve of MP00833-1, NCR3/NKp30 Recombinant Matched Antibody Pair, PBS Only. Capture antibody: 83882-4-PBS. Detection antibody: 83882-2-PBS. Standard: Eg31663. Range: 0.313-40 ng/mL