

For Research Use Only

MRPL16 Recombinant antibody

Catalog Number: 83888-1-RR



Basic Information

Catalog Number: 83888-1-RR	GenBank Accession Number: BC001040	Purification Method: Protein A purification
Size: 100ul , Concentration: 1000 ug/ml by Nanodrop;	GeneID (NCBI): 54948	CloneNo.: 241069A1
Source: Rabbit	UNIPROT ID: Q9NX20	Recommended Dilutions: WB 1:5000-1:50000
Isotype: IgG	Full Name: mitochondrial ribosomal protein L16	
Immunogen Catalog Number: AG6523	Calculated MW: 28 kDa	
	Observed MW: 28 kDa	

Applications

Tested Applications: WB, ELISA	Positive Controls: WB : HEK-293 cells, HepG2 cells, HeLa cells, COLO 320 cells, mouse kidney tissue, mouse brain tissue, mouse liver tissue
Species Specificity: human	

Background Information

MRPL16 (Mitochondrial Ribosomal Protein L16) is a protein coding gene. It encodes a 39S subunit protein. Mitochondrial ribosomes (mitoribosomes) consist of a small 28S subunit and a large 39S subunit. The molecular mass of MRPL16 is 28 kDa.

Storage

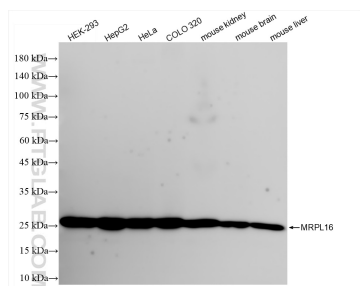
Storage:
Store at -20°C. Stable for one year after shipment.
Storage Buffer:
PBS with 0.02% sodium azide and 50% glycerol pH 7.3.
Aliquoting is unnecessary for -20°C storage

*** 20ul sizes contain 0.1% BSA

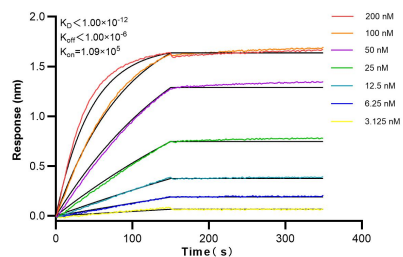
For technical support and original validation data for this product please contact:
T: 1 (888) 4PTGLAB (1-888-478-4522) (toll free in USA), or 1(312) 455-8498 (outside USA)
E: proteintech@ptglab.com
W: ptglab.com

This product is exclusively available under Proteintech Group brand and is not available to purchase from any other manufacturer.

Selected Validation Data



Various lysates were subjected to SDS PAGE followed by western blot with 83888-1-RR (MRPL16 antibody) at dilution of 1:10000 incubated at room temperature for 1.5 hours.



Biolayer interferometry (BLI) kinetic assays of 83888-1-RR against Human MRPL16 were performed. The affinity constant is below 1 pM.