

For Research Use Only

CD25/IL-2RA Recombinant antibody, PBS Only (Detector)

Catalog Number: 83896-1-PBS



Basic Information

Catalog Number: 83896-1-PBS	GenBank Accession Number: BC156627	Purification Method: Protein A purification
Size: 100ug , Concentration: 2 mg/ml by Nanodrop;	GeneID (NCBI): 3559	CloneNo.: 240906A12
Source: Rabbit	UNIPROT ID: P01589	
Isotype: IgG	Full Name: interleukin 2 receptor, alpha	
	Calculated MW: 272 aa, 31 kDa	
	Observed MW: 60 kDa	

Applications

Tested Applications:
WB, Cytometric bead array, Indirect ELISA

Species Specificity:
human

Product Information

83896-1-PBS targets CD25/IL-2RA as part of a matched antibody pair:

MP00837-2: 83896-2-PBS capture and 83896-1-PBS detection (validated in Cytometric bead array)

Unconjugated rabbit recombinant monoclonal antibody in PBS only (BSA and azide free) storage buffer at a concentration of 1 mg/mL, ready for conjugation. Created using Proteintech's proprietary in-house recombinant technology. Recombinant production enables unrivalled batch-to-batch consistency, easy scale-up, and future security of supply.

This conjugation ready format makes antibodies ideal for use in many applications including: ELISAs, multiplex assays requiring matched pairs, mass cytometry, and multiplex imaging applications. Antibody use should be optimized by the end user for each application and assay.

Background Information

Proliferation of T lymphocytes is triggered by the interaction of IL-2 with its specific receptor following T lymphocyte activation. The receptor for IL-2 has three forms, generated by different combinations of three different proteins, the alpha chain (IL-2R alpha), the beta chain (IL-2R beta), and the gamma chain (IL-2R gamma) (PMID: 8476561). IL-2R alpha (also known as CD25) is a type I transmembrane protein present in activated T cells, activated B cells, some thymocytes, myeloid precursors, and oligodendrocytes. CD25 is also found on natural CD4⁺ Foxp3⁺ Treg cells (PMID: 22585674).

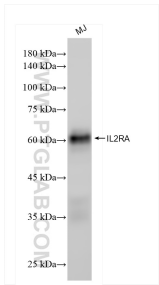
Storage

Storage:
Store at -80°C.
Storage Buffer:
PBS Only

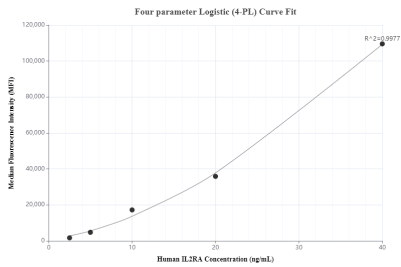
For technical support and original validation data for this product please contact:
T: 1 (888) 4PTGLAB (1-888-478-4522) (toll free in USA), or 1(312) 455-8498 (outside USA)
E: proteintech@ptglab.com
W: ptglab.com

This product is exclusively available under Proteintech Group brand and is not available to purchase from any other manufacturer.

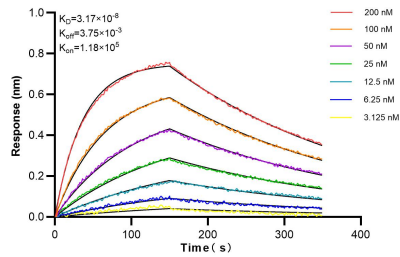
Selected Validation Data



MJ cells were subjected to SDS PAGE followed by western blot with 83896-1-RR (IL2RA antibody) at dilution of 1:10000 incubated at room temperature for 1.5 hours. This data was developed using the same antibody clone with 83896-1-PBS in a different storage buffer formulation.



Cytometric bead array standard curve of MP00837-2, CD25/IL-2RA Recombinant Matched Antibody Pair, PBS Only. Capture antibody: 83896-2-PBS. Detection antibody: 83896-1-PBS. Standard: Eg0408. Range: 2.5-40 ng/mL.



Biolayer interferometry (BLI) kinetic assays of 83896-1-RR against Human CD25/IL2RA were performed. The affinity constant is 31.7 nM.