

For Research Use Only

# CD25/IL-2RA Recombinant antibody

Catalog Number: 83896-1-RR



## Basic Information

<b>Catalog Number:</b> 83896-1-RR	<b>GenBank Accession Number:</b> BC156627	<b>Purification Method:</b> Protein A purification
<b>Size:</b> 100ul , Concentration: 1000 ug/ml by Nanodrop;	<b>GeneID (NCBI):</b> 3559	<b>CloneNo.:</b> 240906A12
<b>Source:</b> Rabbit	<b>UNIPROT ID:</b> P01589	<b>Recommended Dilutions:</b> WB 1:5000-1:50000
<b>Isotype:</b> IgG	<b>Full Name:</b> interleukin 2 receptor, alpha	
	<b>Calculated MW:</b> 272 aa, 31 kDa	
	<b>Observed MW:</b> 60 kDa	

## Applications

<b>Tested Applications:</b> WB, ELISA	<b>Positive Controls:</b> WB : MJ cells,
<b>Species Specificity:</b> human	

## Background Information

Proliferation of T lymphocytes is triggered by the interaction of IL-2 with its specific receptor following T lymphocyte activation. The receptor for IL-2 has three forms, generated by different combinations of three different proteins, the alpha chain (IL-2R alpha), the beta chain (IL-2R beta), and the gamma chain (IL-2R gamma) (PMID: 8476561). IL-2R alpha (also known as CD25) is a type I transmembrane protein present in activated T cells, activated B cells, some thymocytes, myeloid precursors, and oligodendrocytes. CD25 is also found on natural CD4+ Foxp3+ Treg cells (PMID: 22585674).

## Storage

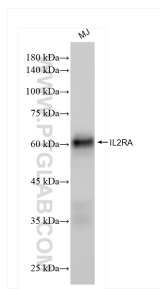
**Storage:**  
Store at -20°C. Stable for one year after shipment.  
**Storage Buffer:**  
PBS with 0.02% sodium azide and 50% glycerol pH 7.3.  
**Aliquoting is unnecessary for -20°C storage**

\*\*\* 20ul sizes contain 0.1% BSA

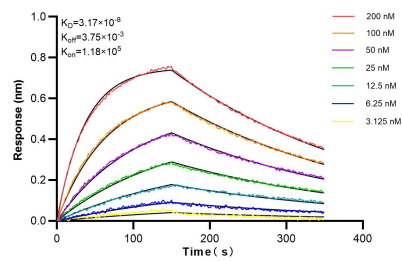
For technical support and original validation data for this product please contact:  
T: 1 (888) 4PTGLAB (1-888-478-4522) (toll free in USA), or 1(312) 455-8498 (outside USA)  
E: [proteintech@ptglab.com](mailto:proteintech@ptglab.com)  
W: [ptglab.com](http://ptglab.com)

This product is exclusively available under Proteintech Group brand and is not available to purchase from any other manufacturer.

## Selected Validation Data



MJ cells were subjected to SDS PAGE followed by western blot with 83896-1-RR (IL2RA antibody) at dilution of 1:10000 incubated at room temperature for 1.5 hours.



Biolayer interferometry (BLI) kinetic assays of 83896-1-RR against Human CD25/IL2RA were performed. The affinity constant is 31.7 nM.