

For Research Use Only

PLEC Recombinant antibody

Catalog Number: 83898-1-RR



Basic Information

Catalog Number: 83898-1-RR	GenBank Accession Number: NM_201380	Purification Method: Protein A purification
Size: 100ul , Concentration: 1000 ug/ml by Nanodrop;	GeneID (NCBI): 5339	CloneNo.: 240891A10
Source: Rabbit	UNIPROT ID: Q15149	Recommended Dilutions: WB 1:1000-1:8000 IF/ICC 1:250-1:1000
Isotype: IgG	Full Name: plectin 1, intermediate filament binding protein 500kDa	
Immunogen Catalog Number: AG29418	Calculated MW: 532 kDa	
	Observed MW: 510 kDa	

Applications

Tested Applications: WB, IF/ICC, ELISA	Positive Controls:
Species Specificity: human	WB : HaCaT cells, A431 cells, HEK-293 cells IF/ICC : A431 cells,

Background Information

Plectin is a large (≥ 500 -kDa) protein that is normally expressed in various tissues including skin, muscle, and brain. It binds to a number of cytoskeletal proteins including microtubules and intermediate filaments and is involved in establishment and dynamic modulation of the cytoskeletal network. In normal cells, it plays a crucial role in cytoskeleton network organization. In keratinocytes, plectin is concentrated at the basal surface, where it links intermediate filaments to the cytoplasmic domain of transmembrane glycoproteins such as integrin beta-4. (PMID: 24218614, PMID: 28281696, PMID: 23750011)

Storage

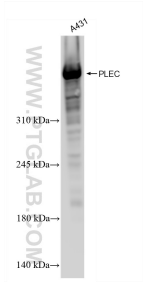
Storage:
Store at -20°C . Stable for one year after shipment.
Storage Buffer:
PBS with 0.02% sodium azide and 50% glycerol pH 7.3.
Aliquoting is unnecessary for -20°C storage

*** 20ul sizes contain 0.1% BSA

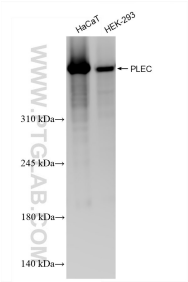
For technical support and original validation data for this product please contact:
T: 1 (888) 4PTGLAB (1-888-478-4522) (toll free in USA), or 1(312) 455-8498 (outside USA)
E: proteintech@ptglab.com
W: ptglab.com

This product is exclusively available under Proteintech Group brand and is not available to purchase from any other manufacturer.

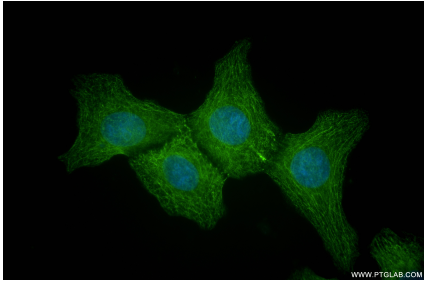
Selected Validation Data



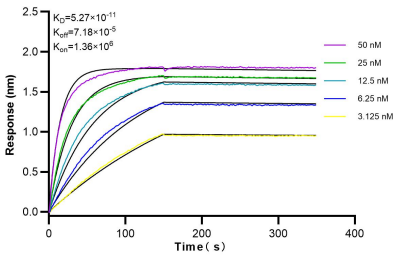
A431 cells were subjected to SDS PAGE followed by western blot with 83898-1-RR (PLEC antibody) at dilution of 1:4000 incubated at room temperature for 1.5 hours.



Various lysates were subjected to SDS PAGE followed by western blot with 83898-1-RR (PLEC antibody) at dilution of 1:4000 incubated at room temperature for 1.5 hours.



Immunofluorescent analysis of (-20°C Methanol) fixed A431 cells using PLEC antibody (83898-1-RR, Clone: 240891A10) at dilution of 1:500 and CoraLite®488-Conjugated Goat Anti-Rabbit IgG(H+L) (SA00013-2).



Biolayer interferometry (BLI) kinetic assays of 83898-1-RR against Human PLEC were performed. The affinity constant is 52.7 pM.