

For Research Use Only

# PLEC Recombinant antibody, PBS Only (Capture)

Catalog Number: 83898-4-PBS



## Basic Information

<b>Catalog Number:</b> 83898-4-PBS	<b>GenBank Accession Number:</b> NM_201380	<b>Purification Method:</b> Protein A purification
<b>Size:</b> 100ug, Concentration: 1 mg/ml by Nanodrop;	<b>GeneID (NCBI):</b> 5339	<b>CloneNo.:</b> 240891E5
<b>Source:</b> Rabbit	<b>UNIPROT ID:</b> Q15149	
<b>Isotype:</b> IgG	<b>Full Name:</b> plectin 1, intermediate filament binding protein 500kDa	
<b>Immunogen Catalog Number:</b> AG29418	<b>Calculated MW:</b> 532 kDa	

## Applications

**Tested Applications:**  
Sandwich ELISA, Indirect ELISA, Sample test

**Species Specificity:**  
human

## Product Information

83898-4-PBS targets PLEC as part of a matched antibody pair.

MP00839-4: 83898-4-PBS capture and 83898-1-PBS detection (validated in Sandwich ELISA)

Unconjugated rabbit recombinant monoclonal antibody in PBS only (BSA and azide free) storage buffer at a concentration of 1 mg/mL, ready for conjugation. Created using Proteintech's proprietary in-house recombinant technology. Recombinant production enables unrivalled batch-to-batch consistency, easy scale-up, and future security of supply.

This conjugation ready format makes antibodies ideal for use in many applications including: ELISAs, multiplex assays requiring matched pairs, mass cytometry, and multiplex imaging applications. Antibody use should be optimized by the end user for each application and assay.

## Storage

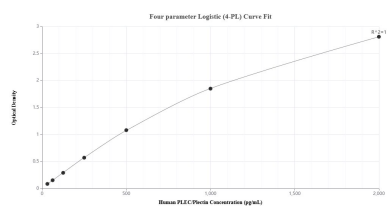
**Storage:**  
Store at -80°C.

**Storage Buffer:**  
PBS Only

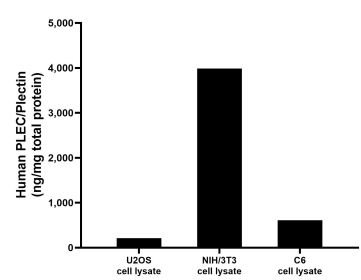
For technical support and original validation data for this product please contact:  
T: 1 (888) 4PTGLAB (1-888-478-4522) (toll free in USA), or 1(312) 455-8498 (outside USA)  
E: [proteintech@ptglab.com](mailto:proteintech@ptglab.com)  
W: [ptglab.com](http://ptglab.com)

This product is exclusively available under Proteintech Group brand and is not available to purchase from any other manufacturer.

## Selected Validation Data



Sandwich ELISA standard curve of MP00839-4, Human PLEC/Plectin Recombinant Matched Antibody Pair - PBS only. 83898-4-PBS was coated to a plate as the capture antibody and incubated with serial dilutions of standard Ag29418. 83898-1-PBS was HRP conjugated as the detection antibody. Range: 31.25-2000 pg/mL



U2OS cell lysate, NIH/3T3 cell lysate and C6 cell lysate were measured. The human PLEC/Plectin concentration was determined to be 212.14 ng/mg total protein in U2OS cell lysate, 3,895.97 ng/mg total protein in NIH/3T3 cell lysate and 609.19 ng/mg total protein in C6 cell lysate.