

For Research Use Only

Perilipin 1 Recombinant antibody

Catalog Number: 83905-4-RR



Basic Information

Catalog Number: 83905-4-RR	GenBank Accession Number: NM_001145311	Purification Method: Protein A purification
Size: 100ul , Concentration: 850 ug/ml by Nanodrop;	GeneID (NCBI): 5346	CloneNo.: 240994H1
Source: Rabbit	UNIPROT ID: O60240	Recommended Dilutions: WB 1:5000-1:50000
Isotype: IgG	Full Name: perilipin	
Immunogen Catalog Number: AG26426	Calculated MW: 56 kDa	
	Observed MW: 67 kDa	

Applications

Tested Applications: WB, ELISA	Positive Controls: WB : MCF-7 cells, MDA-MB-231 cells, 3T3-L1 cells
Species Specificity: human, mouse	

Background Information

PLIN1, also known as Perilipin 1, PLIN, PERI, belongs to the perilipin family. PLIN1 is a hormonally-regulated phosphoprotein that encircles the lipid storage droplet in adipocytes and modulates adipocyte lipid metabolism (PMID: 2040638). PLIN1 is the major cAMP-dependent protein kinase substrate in adipocytes and, when unphosphorylated, may play a role in inhibiting lipolysis. PLIN1 is detected in adipocytes of white adipose tissue, visceral adipose tissue, and mammary gland (PMID: 27832861, 9521880). The deficiency of PLIN1 causes lipodystrophic syndromes, which disables the optimal accumulation of triglycerides in adipocytes that results in abnormal deposition of lipids in tissues such as skeletal muscle and liver. The storage of lipids in the liver leads to insulin resistance and hypertriglyceridemia (PMID: 21345103).

Storage

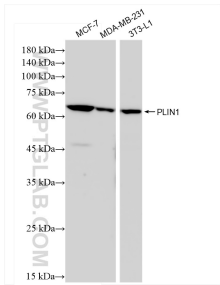
Storage:
Store at -20°C. Stable for one year after shipment.
Storage Buffer:
PBS with 0.02% sodium azide and 50% glycerol pH 7.3.
Aliquoting is unnecessary for -20°C storage

*** 20ul sizes contain 0.1% BSA

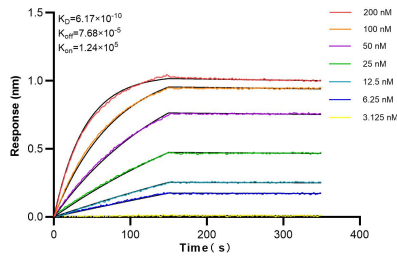
For technical support and original validation data for this product please contact:
T: 1 (888) 4PTGLAB (1-888-478-4522) (toll free in USA), or 1(312) 455-8498 (outside USA)
E: proteintech@ptglab.com
W: ptglab.com

This product is exclusively available under Proteintech Group brand and is not available to purchase from any other manufacturer.

Selected Validation Data



Various lysates were subjected to SDS PAGE followed by western blot with 83905-4-RR (PLIN1 antibody) at dilution of 1:10000 incubated at room temperature for 1.5 hours.



Biolayer interferometry (BLI) kinetic assays of 83905-4-RR against Human Perilipin 1 were performed. The affinity constant is 0.617 nM.