

For Research Use Only

Mouse PD-L1/CD274 Recombinant antibody, PBS Only (Detector)

Catalog Number: 83906-1-PBS



Basic Information

Catalog Number: 83906-1-PBS	GenBank Accession Number: NM_021893.3	Purification Method: Protein A purification
Size: 100ug , Concentration: 1 mg/ml by Nanodrop;	GeneID (NCBI): 60533	CloneNo.: 240993E1
Source: Rabbit	UNIPROT ID: Q9EP73	
Isotype: IgG	Full Name: CD274 antigen	
	Calculated MW: 33 kDa	

Applications

Tested Applications:
Cytometric bead array, Sandwich ELISA, Indirect ELISA, Sample test

Species Specificity:
mouse

Product Information

83906-1-PBS targets PD-L1/CD274 as part of a matched antibody pair:

MP00844-2: 83906-4-PBS capture and 83906-1-PBS detection (validated in Cytometric bead array, Sandwich ELISA)

MP00844-3: 83906-3-PBS capture and 83906-1-PBS detection (validated in Cytometric bead array)

Unconjugated rabbit recombinant monoclonal antibody in PBS only (BSA and azide free) storage buffer at a concentration of 1 mg/mL, ready for conjugation. Created using Proteintech's proprietary in-house recombinant technology. Recombinant production enables unrivalled batch-to-batch consistency, easy scale-up, and future security of supply.

This conjugation ready format makes antibodies ideal for use in many applications including: ELISAs, multiplex assays requiring matched pairs, mass cytometry, and multiplex imaging applications. Antibody use should be optimized by the end user for each application and assay.

Storage

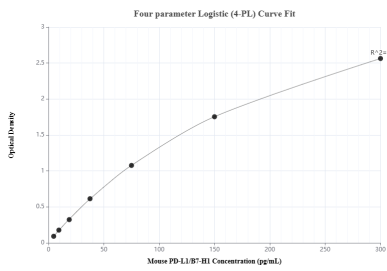
Storage:
Store at -80°C.

Storage Buffer:
PBS Only

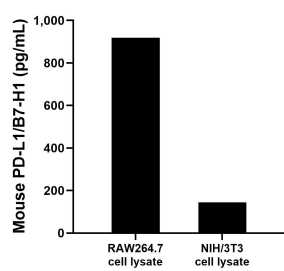
For technical support and original validation data for this product please contact:
T: 1 (888) 4PTGLAB (1-888-478-4522) (toll free in USA), or 1(312) 455-8498 (outside USA)
E: proteintech@ptglab.com
W: ptglab.com

This product is exclusively available under Proteintech Group brand and is not available to purchase from any other manufacturer.

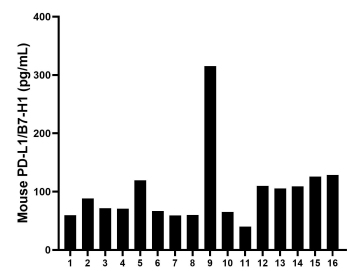
Selected Validation Data



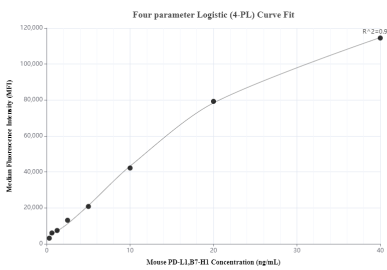
Sandwich ELISA standard curve of MP00844-2, Mouse PD-L1/CD274 Recombinant Matched Antibody Pair - PBS only. 83906-4-PBS was coated to a plate as the capture antibody and incubated with serial dilutions of standard Eg0986. 83906-1-PBS was HRP conjugated as the detection antibody. Range: 4.69-300 pg/mL



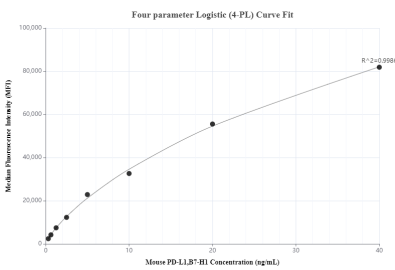
RAW264.7 and NIH/3T3 cell lysate were measured. The mouse PD-L1/CD274 concentration was determined to be 918.7 pg/mL in RAW264.7 cell lysate (based on a 4.8 mg/mL extract load) and 144.6 pg/mL in NIH/3T3 cell lysate (based on a 10.6 mg/mL extract load).



Serum of sixteen individual healthy human donors was measured. The mouse PD-L1/CD274 concentration of detected samples was determined to be 99.6 pg/mL with a range of 40.12 - 315.13 pg/mL



Cytometric bead array standard curve of MP00844-2, MOUSE PD-L1/CD274 Recombinant Matched Antibody Pair, PBS Only. Capture antibody: 83906-4-PBS. Detection antibody: 83906-1-PBS. Standard: Eg0986. Range: 0.313-40 ng/mL



Cytometric bead array standard curve of MP00844-3, MOUSE PD-L1/CD274 Recombinant Matched Antibody Pair, PBS Only. Capture antibody: 83906-3-PBS. Detection antibody: 83906-1-PBS. Standard: Eg0986. Range: 0.313-40 ng/mL