

For Research Use Only

# B7-H6 Recombinant antibody

Catalog Number: 83908-3-RR



## Basic Information

Catalog Number:

83908-3-RR

Size:

100ul , Concentration: 1000 ug/ml by Nanodrop;

Source:

Rabbit

Isotype:

IgG

GenBank Accession Number:

BC136800

GeneID (NCBI):

374383

UNIPROT ID:

Q68D85

Full Name:

hypothetical protein

DKFZp686O24166

Calculated MW:

51 kDa

Observed MW:

75-80 kDa

Purification Method:

Protein A purification

CloneNo.:

240808F7

Recommended Dilutions:

WB 1:2000-1:10000

## Applications

Tested Applications:

WB, ELISA

Species Specificity:

human

Positive Controls:

WB : HepG2 cells, K-562 cells, HeLa cells, HEK-293 cells

## Background Information

B7-H6, also known as NCR3LG1, is a member of the B7 family of immunoreceptors. It is a 454-aa-long type I transmembrane protein consisting of an extracellular region, a transmembrane segment, and a cytoplasmic domain which contains an immunoreceptor tyrosine-based inhibitory motif (ITIM), an SH2-binding domain, and an SH3-binding motif. B7-H6 triggers Nkp30-mediated activation of human NK cells (PMID: 19528259). It has been reported that B7H6 is expressed in various types of tumor cells and plays a prominent role in natural killer cell immunosurveillance (PMID: 35697295). The apparent molecular weight of B7-H6 is larger than the calculated molecular weight of 51 kDa due to glycosylation (PMID: 19528259).

## Storage

Storage:

Store at -20°C. Stable for one year after shipment.

Storage Buffer:

PBS with 0.02% sodium azide and 50% glycerol pH 7.3.

Aliquoting is unnecessary for -20°C storage

\*\*\* 20ul sizes contain 0.1% BSA

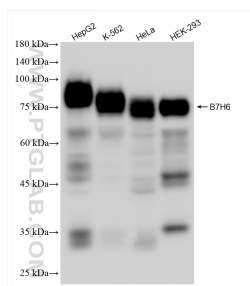
For technical support and original validation data for this product please contact:

T: 1 (888) 4PTGLAB (1-888-478-4522) (toll free in USA), or 1(312) 455-8498 (outside USA)

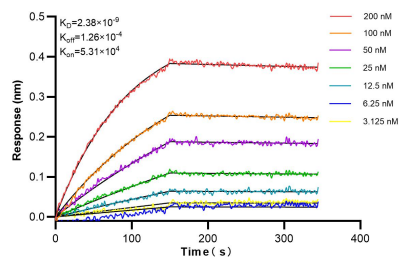
E: [proteintech@ptglab.com](mailto:proteintech@ptglab.com)  
W: [ptglab.com](http://ptglab.com)

This product is exclusively available under Proteintech Group brand and is not available to purchase from any other manufacturer.

## Selected Validation Data



Various lysates were subjected to SDS PAGE followed by western blot with 83908-3-RR (B7H6 antibody) at dilution of 1:5000 incubated at room temperature for 1.5 hours.



Biolayer interferometry (BLI) kinetic assays of 83908-3-RR against Human B7-H6 were performed. The affinity constant is 2.38 nM.