

For Research Use Only

B7-H6 Recombinant antibody

Catalog Number: 83908-4-RR



Basic Information

Catalog Number:

83908-4-RR

Size:

100ul , Concentration: 1000 ug/ml by Nanodrop;

Source:

Rabbit

Isotype:

IgG

GenBank Accession Number:

BC136800

GeneID (NCBI):

374383

UNIPROT ID:

Q68D85

Full Name:

hypothetical protein

DKFZp686O24166

Calculated MW:

51 kDa

Observed MW:

75-80 kDa

Purification Method:

Protein A purification

CloneNo.:

240808B2

Recommended Dilutions:

IF/ICC 1:200-1:800

Applications

Tested Applications:

IF/ICC, ELISA

Species Specificity:

human

Positive Controls:

IF/ICC : Raji cells,

Background Information

B7-H6, also known as NCR3LG1, is a member of the B7 family of immunoreceptors. It is a 454-aa-long type I transmembrane protein consisting of an extracellular region, a transmembrane segment, and a cytoplasmic domain which contains an immunoreceptor tyrosine-based inhibitory motif (ITIM), an SH2-binding domain, and an SH3-binding motif. B7-H6 triggers Nkp30-mediated activation of human NK cells (PMID: 19528259). It has been reported that B7H6 is expressed in various types of tumor cells and plays a prominent role in natural killer cell immunosurveillance (PMID: 35697295). The apparent molecular weight of B7-H6 is larger than the calculated molecular weight of 51 kDa due to glycosylation (PMID: 19528259).

Storage

Storage:

Store at -20°C. Stable for one year after shipment.

Storage Buffer:

PBS with 0.02% sodium azide and 50% glycerol pH 7.3.

Aliquoting is unnecessary for -20°C storage

*** 20ul sizes contain 0.1% BSA

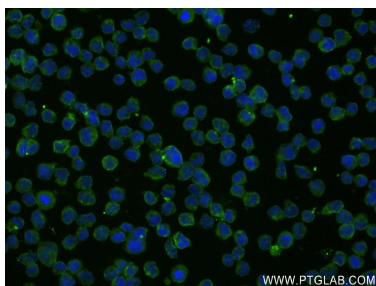
For technical support and original validation data for this product please contact:

T: 1 (888) 4PTGLAB (1-888-478-4522) (toll free in USA), or 1(312) 455-8498 (outside USA)

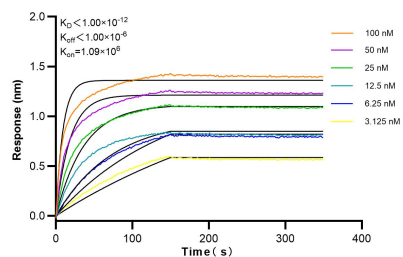
E: proteintech@ptglab.com
W: ptglab.com

This product is exclusively available under Proteintech Group brand and is not available to purchase from any other manufacturer.

Selected Validation Data



Immunofluorescent analysis of (4% PFA) fixed Raji cells using B7H6 antibody (83908-4-RR, Clone: 240808B2) at dilution of 1:400 and CoraLite® 488-Conjugated AffiniPure Goat Anti-Rabbit IgG(H+L) (SA00013-2).



Biolayer interferometry (BLI) kinetic assays of 83908-4-RR against Human B7H6 were performed. The affinity constant is below 1 pM.