

For Research Use Only

# BUB1B Recombinant antibody, PBS Only

Catalog Number: 83920-6-PBS



## Basic Information

<b>Catalog Number:</b> 83920-6-PBS	<b>GenBank Accession Number:</b> BC018739	<b>Purification Method:</b> Protein A purification
<b>Size:</b> 100ug , Concentration: 1 mg/ml by Nanodrop;	<b>GeneID (NCBI):</b> 701	<b>CloneNo.:</b> 240969F7
<b>Source:</b> Rabbit	<b>UNIPROT ID:</b> O60566	
<b>Isotype:</b> IgG	<b>Full Name:</b> budding uninhibited by benzimidazoles 1 homolog beta (yeast)	
<b>Immunogen Catalog Number:</b> AG34182	<b>Calculated MW:</b> 1050 aa, 120 kDa	
	<b>Observed MW:</b> 130 kDa	

## Applications

**Tested Applications:**  
WB, IHC, IF/ICC, ELISA

**Species Specificity:**  
human, mouse

## Background Information

BUB1B(Mitotic checkpoint serine/threonine-protein kinase BUB1 beta), also named BUBR1, MAD3 and SSK1, belongs to the BUB1 subfamily. Human BUB1B is a 120 kDa protein that plays a central role in the spindle assembly checkpoint (SAC), the evolutionary conserved and self-regulatory system of higher organisms that monitors and repairs defects in chromosome segregation in mitotic cells(PMID:22201036). In addition to phosphorylation, BUB1B is subjected to posttranslational modifications including acetylation(PMID:22167194). Defects in BUB1B cause premature chromatid separation trait (PCS) and mosaic variegated aneuploidy syndrome type 1 (MVA1).

## Storage

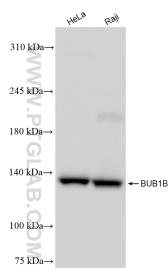
**Storage:**  
Store at -80°C.

**Storage Buffer:**  
PBS Only

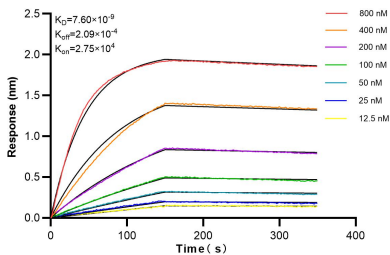
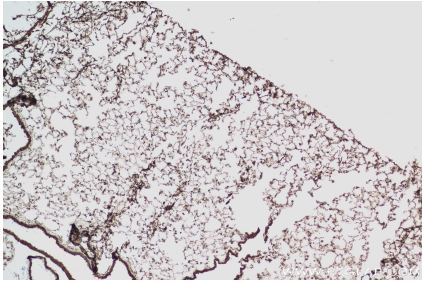
For technical support and original validation data for this product please contact:  
T: 1 (888) 4PTGLAB (1-888-478-4522) (toll free in USA), or 1(312) 455-8498 (outside USA)  
E: [proteintech@ptglab.com](mailto:proteintech@ptglab.com)  
W: [ptglab.com](http://ptglab.com)

This product is exclusively available under Proteintech Group brand and is not available to purchase from any other manufacturer.

## Selected Validation Data



Various lysates were subjected to SDS PAGE followed by western blot with 83920-6-RR (BUB1B antibody) at dilution of 1:5000 incubated at room temperature for 1.5 hours. This data was developed using the same antibody clone with 83920-6-PBS in a different storage buffer formulation.



Biolayer interferometry (BLI) kinetic assays of 83920-6-RR against Human BUB1B were performed. The affinity constant is 7.60 nM.