

For Research Use Only

RPL18A Recombinant antibody

Catalog Number: 83928-1-RR



Basic Information

Catalog Number: 83928-1-RR	GenBank Accession Number: BC066319	Purification Method: Protein A purification
Size: 100ul , Concentration: 1000 ug/ml by Nanodrop;	GeneID (NCBI): 6142	CloneNo.: 240841B1
Source: Rabbit	UNIPROT ID: Q02543	Recommended Dilutions: WB 1:5000-1:50000 IHC 1:1000-1:4000
Isotype: IgG	Full Name: ribosomal protein L18a	
Immunogen Catalog Number: AG6251	Calculated MW: 21 kDa	
	Observed MW: 23 kDa	

Applications

Tested Applications:
WB, IHC, ELISA

Species Specificity:
human, mouse, rat

Note-IHC: suggested antigen retrieval with **TE buffer pH 9.0; (*) Alternatively, antigen retrieval may be performed with citrate buffer pH 6.0**

Positive Controls:

WB : HeLa cells, HepG2 cells, PC-3 cells, MCF-7 cells, NIH/3T3 cells, mouse brain tissue, rat brain tissue

IHC : human stomach cancer tissue,

Background Information

RPL18A, also named as 60S ribosomal protein L18a(Ribosomal Protein L18a), located on 19p13.11, is a protein coding gene. RPL18A is a member of the L18AE family of ribosomal proteins that is a component of the 60S subunit. The encoded protein may play a role in viral replication by interacting with the hepatitis C virus internal ribosome entry site (IRES). Diseases such as Hepatitis C Virus and Omsk Hemorrhagic Fever are associated with RPL18A. The molecular weight of RPL18A is 23 kDa.

Storage

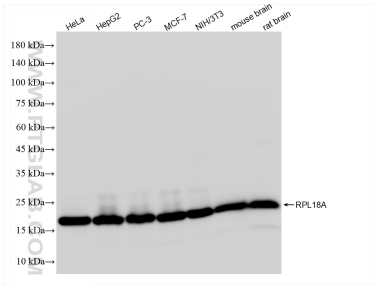
Storage:
Store at -20°C. Stable for one year after shipment.
Storage Buffer:
PBS with 0.02% sodium azide and 50% glycerol pH 7.3.
Aliquoting is unnecessary for -20°C storage

***** 20ul sizes contain 0.1% BSA**

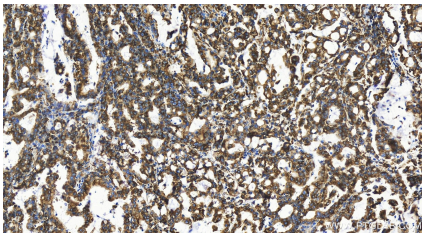
For technical support and original validation data for this product please contact:
T: 1 (888) 4PTGLAB (1-888-478-4522) (toll free in USA), or 1(312) 455-8498 (outside USA)
E: proteintech@ptglab.com
W: ptglab.com

This product is exclusively available under Proteintech Group brand and is not available to purchase from any other manufacturer.

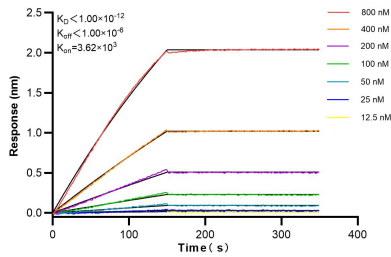
Selected Validation Data



Various lysates were subjected to SDS PAGE followed by western blot with 83928-1-RR (RPL18A antibody) at dilution of 1:10000 incubated at room temperature for 1.5 hours.



Immunohistochemical analysis of paraffin-embedded human stomach cancer tissue slide using 83928-1-RR (RPL18A antibody) at dilution of 1:2000 (under 20x lens). Heat mediated antigen retrieval with Tris-EDTA buffer(pH9).



Biolayer interferometry (BLI) kinetic assays of 83928-1-RR against Human RPL18A were performed. The affinity constant is below 1 pM.