

For Research Use Only

Phospho-POLR2A (Ser7) Recombinant antibody

Catalog Number: 83932-1-RR



Basic Information

| | | |
|--|---|---|
| Catalog Number: 83932-1-RR | GenBank Accession Number: NM_000937 | Purification Method: Protein A purification |
| Size: 100ul , Concentration: 1000 ug/ml by Nanodrop; | GeneID (NCBI): 5430 | CloneNo.: 240829F12 |
| Source: Rabbit | UNIPROT ID: P24928 | Recommended Dilutions: WB 1:5000-1:50000 |
| Isotype: IgG | Full Name: polymerase (RNA) II (DNA directed) polypeptide A, 220kDa | |
| | Calculated MW: 217 kDa | |
| | Observed MW: 260 kDa | |

Applications

| | |
|--|--|
| Tested Applications: WB, ELISA | Positive Controls: |
| Species Specificity: human | WB : HEK-293 cells, λ phosphatase treated HEK-293 cells |

Background Information

DNA-directed RNA polymerase II subunit RPB1(POLR2A), is part of the core element of the basic RNA polymerase II transcription mechanism. During transcription elongation, Pol II moves on the template as the transcript elongates. Elongation is influenced by the phosphorylation status of the C-terminal domain (CTD) of Pol II largest subunit (RPB1), which serves as a platform for the assembly of factors that regulate transcription initiation, elongation, termination, and mRNA processing.

Storage

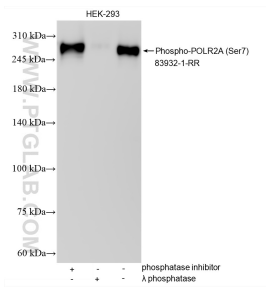
Storage:
Store at -20°C. Stable for one year after shipment.
Storage Buffer:
PBS with 0.02% sodium azide and 50% glycerol pH 7.3.
Aliquoting is unnecessary for -20°C storage

*** 20ul sizes contain 0.1% BSA

For technical support and original validation data for this product please contact:
T: 1 (888) 4PTGLAB (1-888-478-4522) (toll free in USA), or 1(312) 455-8498 (outside USA)
E: proteintech@ptglab.com
W: ptglab.com

This product is exclusively available under Proteintech Group brand and is not available to purchase from any other manufacturer.

Selected Validation Data



Non-treated HEK-293 cells, phosphatase inhibitor treated HEK-293 cells and λ phosphatase treated HEK-293 cells were subjected to SDS PAGE followed by western blot with 83932-1-RR (POLR2A antibody) at dilution of 1:10000 incubated at room temperature for 1.5 hours.