

For Research Use Only

CXCL1 Recombinant antibody

Catalog Number: 83937-3-RR



Basic Information

Catalog Number: 83937-3-RR	GenBank Accession Number: BC011976	Purification Method: Protein A purification
Size: 100ul , Concentration: 1000 ug/ml by Nanodrop;	GeneID (NCBI): 2919	CloneNo.: 240990E4
Source: Rabbit	UNIPROT ID: P09341	Recommended Dilutions: WB 1:1000-1:4000
Isotype: IgG	Full Name: chemokine (C-X-C motif) ligand 1 (melanoma growth stimulating activity, alpha)	
Immunogen Catalog Number: AG2917	Calculated MW: 8 kDa to 14 kDa	
	Observed MW: 11 kDa	

Applications

Tested Applications: WB, ELISA	Positive Controls: WB : HUVEC cells,
Species Specificity: human	

Background Information

CXCL1 a is a member of CXC family and also known as keratinocyte-derived chemokines (KC) or growth-related oncogene (GRO). CXCL1 is expressed by macrophages, neutrophils and epithelial cells. CXCL1 binding specifically to the CXC chemokine receptor CXCR2, is involved in fibrogenesis and angiogenesis. This protein also plays a role in inflammation and as a chemoattractant for neutrophils. CXCL1 is upregulated in some types of human cancer, including colorectal, bladder, breast, prostate and skin cancers.

Storage

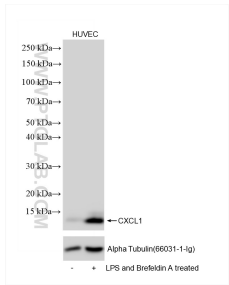
Storage:
Store at -20°C. Stable for one year after shipment.
Storage Buffer:
PBS with 0.02% sodium azide and 50% glycerol pH 7.3.
Aliquoting is unnecessary for -20°C storage

*** 20ul sizes contain 0.1% BSA

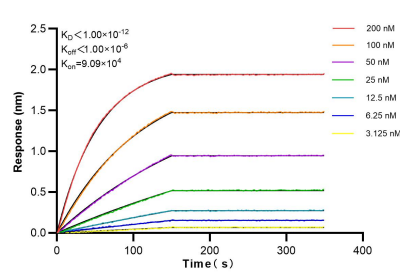
For technical support and original validation data for this product please contact:
T: 1 (888) 4PTGLAB (1-888-478-4522) (toll free in USA), or 1(312) 455-8498 (outside USA)
E: proteintech@ptglab.com
W: ptglab.com

This product is exclusively available under Proteintech Group brand and is not available to purchase from any other manufacturer.

Selected Validation Data



Untreated, LPS and Brefeldin A treated HUVEC cells were subjected to SDS PAGE followed by western blot with 83937-3-RR (CXCL1 antibody) at dilution of 1:2000 incubated at room temperature for 1.5 hours.



Biolayer interferometry (BLI) kinetic assays of 83937-3-RR against Human CXCL1 were performed. The affinity constant is below 1 pM.