

For Research Use Only

TOB1 Recombinant antibody, PBS Only (Capture)

Catalog Number: 83944-1-PBS

Featured Product



Basic Information

Catalog Number:

83944-1-PBS

Size:

100ug, Concentration: 1 mg/ml by Nanodrop;

Source:

Rabbit

Isotype:

IgG

Immunogen Catalog Number:

AG6714

GenBank Accession Number:

BC031406

GeneID (NCBI):

10140

UNIPROT ID:

P50616

Full Name:

transducer of ERBB2, 1

Calculated MW:

38 kDa

Observed MW:

38-45 kDa

Purification Method:

Protein A purification

CloneNo.:

241043A5

Applications

Tested Applications:

WB, Cytometric bead array, Indirect ELISA

Species Specificity:

human

Product Information

83944-1-PBS targets TOB1 as part of a matched antibody pair:

MP00930-2: 83944-1-PBS capture and 83944-3-PBS detection (validated in Cytometric bead array)

MP00930-3: 83944-1-PBS capture and 83944-2-PBS detection (validated in Cytometric bead array)

Unconjugated rabbit recombinant monoclonal antibody in PBS only (BSA and azide free) storage buffer at a concentration of 1 mg/mL, ready for conjugation. Created using Proteintech's proprietary in-house recombinant technology. Recombinant production enables unrivalled batch-to-batch consistency, easy scale-up, and future security of supply.

This conjugation ready format makes antibodies ideal for use in many applications including: ELISAs, multiplex assays requiring matched pairs, mass cytometry, and multiplex imaging applications. Antibody use should be optimized by the end user for each application and assay.

Background Information

TOB1, also known as APRO6 or TROB1, is a member of the transducer of erbB-2/B-cell translocation gene protein family. Members of this family are anti-proliferative factors that have the potential to regulate cell growth. The TOB1 protein has a large additional C-terminal region, which contains PAM2 motifs that mediate interactions with poly(A)-binding proteins. It is mainly located in the cell nucleus and will transfer between the cell nucleus and the cytoplasm. The more phosphorylation, the more obvious the cytoplasmic localization. The predicted MW of this protein is 38 kDa. Catalog#83944-1-RR recognises 38 and 45 kDa band, and the additional 45 kDa band may be due to phosphorylation.

Storage

Storage:

Store at -80°C.

Storage Buffer:

PBS only, pH7.3

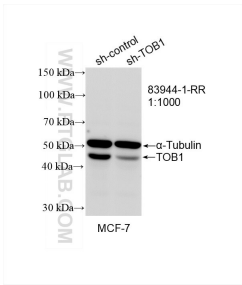
For technical support and original validation data for this product please contact:

T: 1 (888) 4PTGLAB (1-888-478-4522) (toll free in USA), or 1(312) 455-8498 (outside USA)

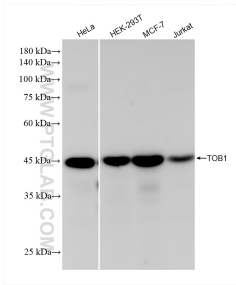
E: proteintech@ptglab.com
W: ptglab.com

This product is exclusively available under Proteintech Group brand and is not available to purchase from any other manufacturer.

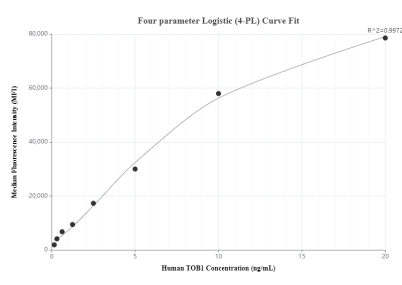
Selected Validation Data



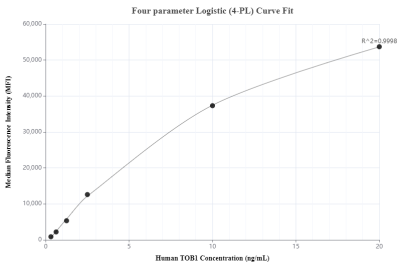
WB result of TOB1 antibody (83944-1-RR; 1:1000; incubated at room temperature for 1.5 hours) with sh-Control and sh-TOB1 transfected MCF-7 cells. This data was developed using the same antibody clone with 83944-1-PBS in a different storage buffer formulation.



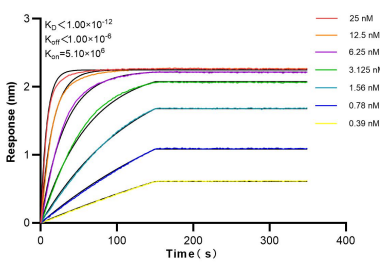
Various lysates were subjected to SDS PAGE followed by western blot with 83944-1-RR (TOB1 antibody) at dilution of 1:4000 incubated at room temperature for 1.5 hours. This data was developed using the same antibody clone with 83944-1-PBS in a different storage buffer formulation.



Cytometric bead array standard curve of MP00930-2, TOB1 Recombinant Matched Antibody Pair, PBS Only. Capture antibody: 83944-1-PBS. Detection antibody: 83944-3-PBS. Standard: Ag6714. Range: 0.156-20 ng/mL.



Cytometric bead array standard curve of MP00930-3, TOB1 Recombinant Matched Antibody Pair, PBS Only. Capture antibody: 83944-1-PBS. Detection antibody: 83944-2-PBS. Standard: Ag6714. Range: 0.313-20 ng/mL.



Biolayer interferometry (BLI) kinetic assays of 83944-1-RR against Human TOB1 were performed. The affinity constant is below 1 pM.