

For Research Use Only

TOB1 Recombinant antibody

Catalog Number: 83944-1-RR

Featured Product



Basic Information

Catalog Number:

83944-1-RR

Size:

100ul , Concentration: 1000 ug/ml by Nanodrop;

Source:

Rabbit

Isotype:

IgG

Immunogen Catalog Number:

AG6714

GenBank Accession Number:

BC031406

GeneID (NCBI):

10140

UNIPROT ID:

P50616

Full Name:

transducer of ERBB2, 1

Calculated MW:

38 kDa

Observed MW:

38-45 kDa

Purification Method:

Protein A purification

CloneNo.:

241043A5

Recommended Dilutions:

WB 1:1000-1:8000

Applications

Tested Applications:

WB, ELISA

Species Specificity:

human

Positive Controls:

WB : HeLa cells, MCF-7 cells, HEK-293T cells, Jurkat cells

Background Information

TOB1, also known as APRO6 or TROB1, is a member of the transducer of erbB-2/B-cell translocation gene protein family. Members of this family are anti-proliferative factors that have the potential to regulate cell growth. The TOB1 protein has a large additional C-terminal region, which contains PAM2 motifs that mediate interactions with poly(A)-binding proteins. It is mainly located in the cell nucleus and will transfer between the cell nucleus and the cytoplasm. The more phosphorylation, the more obvious the cytoplasmic localization. The predicted MW of this protein is 38 kDa. Catalog#83944-1-RR recognises 38 and 45 kDa band, and the additional 45 kDa band may be due to phosphorylation.

Storage

Storage:

Store at -20°C. Stable for one year after shipment.

Storage Buffer:

PBS with 0.02% sodium azide and 50% glycerol, pH7.3

Aliquoting is unnecessary for -20°C storage

*** 20ul sizes contain 0.1% BSA

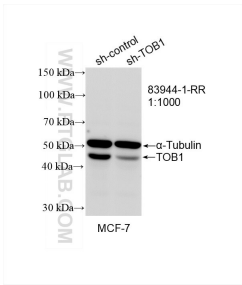
For technical support and original validation data for this product please contact:

T: 1 (888) 4PTGLAB (1-888-478-4522) (toll free in USA), or 1(312) 455-8498 (outside USA)

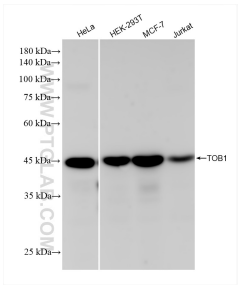
E: proteintech@ptglab.com
W: ptglab.com

This product is exclusively available under Proteintech Group brand and is not available to purchase from any other manufacturer.

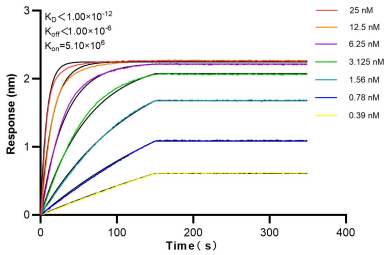
Selected Validation Data



WB result of TOB1 antibody (83944-1-RR; 1:1000; incubated at room temperature for 1.5 hours) with sh-Control and sh-TOB1 transfected MCF-7 cells.



Various lysates were subjected to SDS PAGE followed by western blot with 83944-1-RR (TOB1 antibody) at dilution of 1:4000 incubated at room temperature for 1.5 hours.



Biolayer interferometry (BLI) kinetic assays of 83944-1-RR against Human TOB1 were performed. The affinity constant is below 1 pM.